

RETROFIT STAINLESS DRYER FLOOR

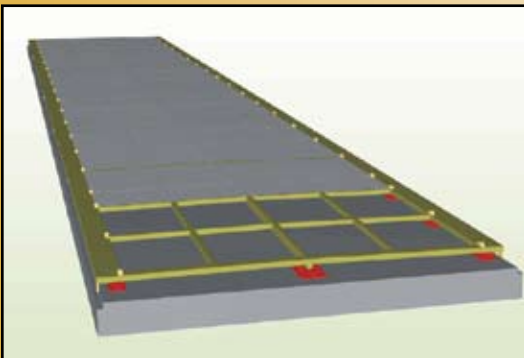


Westmill's Retrofit Stainless Steel Dryer Floor can be installed over top of your existing concrete foundation, even if it is old and in disrepair.

Installing a Westmill™ Retrofit Stainless Steel Dryer Floor underneath your Dryer will increase your Dryer's thermal efficiency and reduce in-plant Dryer emissions.

Westmill™ can simply seal weld the new 3" or 4" thick insulated floor to the bottom of your existing door frames, or for optimum results, you should consider replacing your door frames with Westmill's *Quick-Install* Door Cartridge System. Even if your existing concrete foundation is old and in disrepair, we can still install our floor above it.

By utilizing superior insulating techniques with completely seal-welded construction, we have designed the most well sealed and energy efficient Dryer floor available today. We have incorporated features that help make the Dryer clean-up and maintenance process friendly while minimizing downtime. Our robust designs, using quality components, will provide you with many years of production with a minimum of maintenance expense.



Floor features a heavy structural tube frame with 3" or 4" thick insulated floor panels.



Crowning in the middle, or sloping to one side, allows for better drainage.



Our floor features leak-proof seal-welded construction.

Product Features

Westmill™ has installed new Stainless Dryer Floors underneath almost every type and manufacturer of Dryer. Although the Dryers are different, the results are always the same:

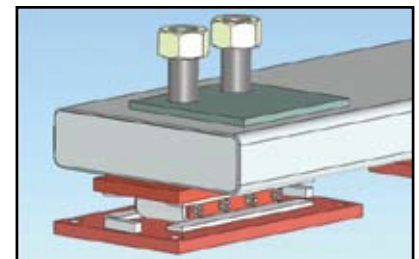
- Seal-welded, leak-free construction
- Increased energy conservation and less fuel usage
- No in-plant emissions due to leakage from the floor
- Increased veneer production
- Straight, level fabrication
- Level Dryer eliminates plugs-ups due to sheet tracking problems from an uneven dryer
- More economical and longer lasting than replacing an entire concrete floor



Above, a Westmill stainless steel floor module is pushed into a Dryer from the end.

Standard Features

- Westmill's Floor is sloped from one side to the other, or can be crowned in the middle to improve Dryer clean out and drainage of wash water
- Factory seal-welded Stainless Steel 304L insulated panels, 3" or 4" thick
- Strong mild steel tube skeleton to keep Dryer straight and strong.
- Westmill's proprietary "Easy-Lift" jacking and leveling system ensures Dryer is always level throughout its length and on both sides. This system can be readjusted at any time in the future if necessary
- Captured expansion roller assembly under each Dryer door post
- Center of floor assembly is supported by an expansion ski system



Jacking system

Why Westmill?

Others claim to be able to install a floor underneath your Dryer, but Westmill has mastered the technology with installations throughout North America. We proudly stand behind our work, with retrofit installations at:

- Freres Lumber, Mill City OR (3 retrofits)
- Freres Lumber, Lyons OR
- Bessemer Plywood Corporation, Bessemer MI
- West Fraser, Quesnel BC (2 retrofits)
- Pacific Wood Laminates, Brookings OR
- Coastland Wood Industries, Delta BC (2 retrofits)
- Richmond Plywood, Richmond BC
- Louisiana Pacific, Golden BC
- Federated Cooperatives, Canoe BC
- Tolko Industries, Heffley Creek BC
- And numerous new floors on new Westmill Dryers



Westmill has mastered the technology of installing Dryer floors.

Before design work starts on each floor retrofit project, Westmill engineers will visit your site for an inspection of your current foundation. Based on the findings, Westmill can discuss with you and decide upon the following options:

- Building the floor in place or fabricating floor modules
- Installation from the Dryer's end or side
- Raising the Dryer or keeping it at the same elevation
- Determining if our proprietary Dryer leveling system is required

Installation

Installation is quick and easy. Pre-assembly of the floor frame can be done before shutting the Dryer down to minimize installation time. A Westmill site supervisor helps your crew get the job done quickly and correctly.

