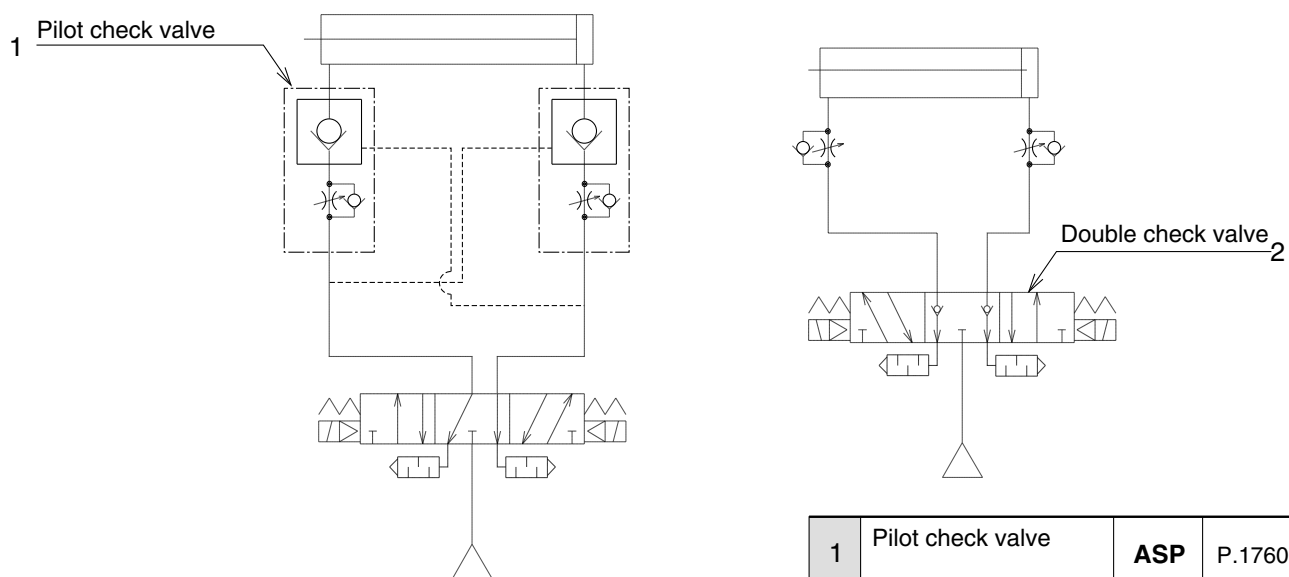


## J Safety

# J1 Maintaining the Position of an Actuator

### PURPOSE

The use of double check valves with built-in check valve mechanism or pilot check valves in the circuit will maintain the position of an actuator.



1	Pilot check valve	<b>ASP</b>	P.1760
2	Double check valve		P.1347 P.1469

### NOTES

When releasing the residual pressure of an actuator is necessary while maintaining its position, equipment to release the residual pressure needs to be added. (For the residual pressure release measures, refer to "J4 Residual Pressure Relief".