

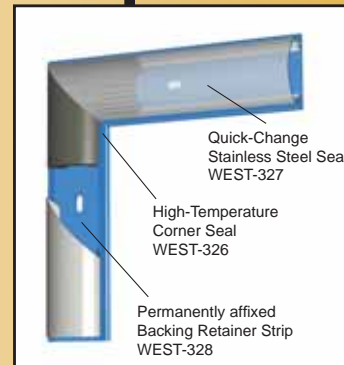
**Maxon APX gas burner**

**Jet tubes**

**Gas piping/combustion air delivery piping**


### More features

- **Zone partition walls** with access doors in upper duct.
- **Adjustable air balancing plates** to allow equal air flow to each deck.
- **Roll baffles** between each Dryer section.
- **Pre-assembled fan modules** combine accurate shop alignment with quick field installation.
- **Stack sections** provided for outside of plant roof.
- **Heating systems:** natural gas and propane burners, steam coils, thermal oil coils, and direct-fired hot air heating systems available.

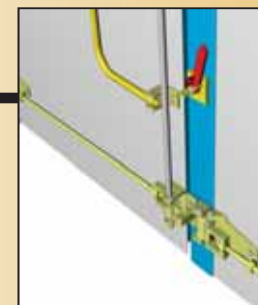
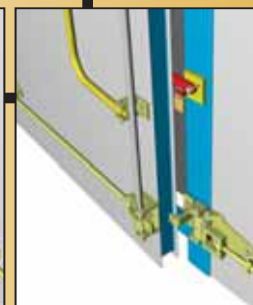

**Hot air circulation fans**

**Door seal System 1-2-3™**

**Factory-assembled fan modules**

*Westmill™ provides consulting, plant layout and engineering services to ensure you get the right machine for your facility.*

*Let us work with you to find the right Dryer solution to meet your needs.*


**Dryer doors and handrail**

**Push button station**

**Door lockout system**


## SIX-DECK JET DRYERS



Westmill™ delivered this new six-deck Jet Dryer to West Fraser's Alberta Plywood in Edmonton, Alberta. The installation included complete Dryer infeed and outfeed systems and a full Controllogix control system. Westmill™ also supplied new Controllogix controls for a relocated existing Dry Stacker, as well as a new PanelView Plus/ VersaView 1500 touchscreen.

**Westmill™ has taken every step to make our Veneer Dryer the best available in the industry today**

By utilizing superior insulating techniques with a completely seal-welded housing, we have designed the most well sealed and energy-efficient Dryer available today!

Many features that are options on other Dryers are standard equipment on a Westmill™ Dryer. And our robust designs, using quality components, will provide you with many years of production with a minimum of maintenance expense.



# What makes a Westmill™ Jet Dryer different?

- **Dryer floor:** stainless steel, seal welded and insulated (mild steel optional), rust-proof for long life.
- **Modular components:** to reduce installation time and costs.
- **Vented infeed section:** to reduce in-plant emissions.
- **Dura-Latch™ patented articulating door hardware:** creates positive door sealing and greater door seal life.
- **Quick-change Stainless Door Seal System 1-2-3™:** remove and replace seals in less than 5 minutes, compared to 2-3 man-hours. Our stainless door seal withstands moderate direct exposure to fire, unlike fabric tadpole seals.
- **Dryer drive tower** with individual VFD deck control for minimum maintenance and maximum veneer recovery in the event of a plug-up.
- **Smooth upper duct floor:** to reduce debris build-up.
- **Dryer roof and side wall:** 6" insulated, seal-welded and leak-proof (2" thicker than others). Supplied in stainless steel.
- **Standard conveyor castings** available on open market.
- **Hot air circulation fans:** Super efficient 50 HP motors, with 49" New York Blower Class III fans. Screens at fan inlet (hinged for easy maintenance and access) to prevent wood fines from clogging steam coils and jet tubes. VFDs available for maximum veneer production.
- **Electro-pneumatic exhaust stack damper assemblies** allow precise positioning and immediate opening in event of deluge. Humidity-monitoring system keeps Dryer air moisture optimized, and automatically controls damper position, resulting in flatter, better conditioned wood.
- **Fire suppression:** upper duct fogging system, as well as automatic floor-spray system.
- **PLC-based Dryer control system** with Allen Bradley ControlLogix L61 processor, rack, power supply, HMI touchscreen, all I/O cards, ethernet flex I/O panels and control consoles, and veneer temperature monitoring.
- **Single-pass, dual-fan cooling sections** with VFD control via sheet temperature measurement. Maximized cooling prevents glue-spread problems, and VFDs also reduce electrical consumption in winter months.
- **PLC-based plug-up detection system** with touchscreen alarms and individual above-door indicator lights.
- **Grease lube manifold system for all Dryer fans:** hot air circulation, cooler section, green-end steam evacuation. Ensures bearings are lubricated regularly.



Above:  
Sequential  
Unloader



At left:  
Drive tower



Above:  
Field  
installation of  
seal-welded  
floor panels



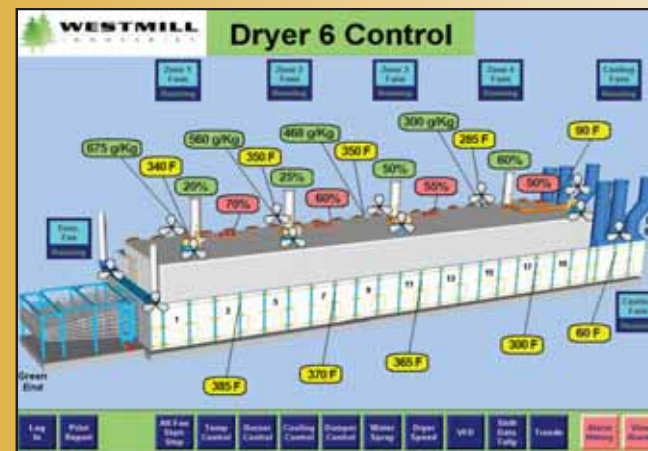
At left:  
Humidity  
probe and  
temperature  
sensor



Vented infeed section



VFD cabinets



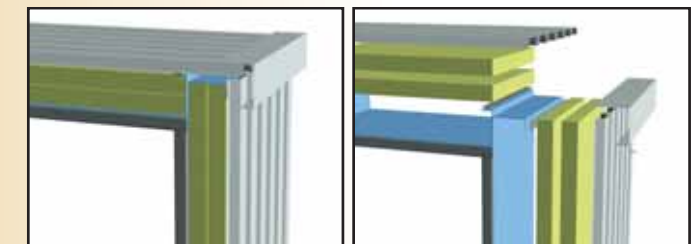
PLC-based Dryer control with HMI touchscreen



Dryer conveyor



Pneumatic  
chain tightener



The corrugated design of the Dryer housing (above left; exploded above right) allows the housing to breathe and prevents condensation from being trapped. All required Dryer housing penetration flanges are included.

## Product features

**Sealed up:** To prevent Dryer emissions from escaping into your plant, the Dryer is fully seal-welded. This provides the tightest, best sealed and most environmentally friendly Dryer available today.

**Anchored down:** Our Dryer is anchored in the middle, allowing it to expand thermally towards each end.

**On track:** Expansion rollers keep the Dryer straight and will not bind like steel-on-steel rails.

**Long-lasting doors:** Floating skin warp-resistant Dryer doors feature stainless steel on both sides for corrosion resistance.

**The best door hardware:** Robust and easy to use, our famous hardware keeps your Dryer sealed and workers safe from strain.

**Emission prevention:** Vented infeed section prevents fugitive emissions and keeps your plant air clean. Emissions go to your abatement equipment, ensuring you comply with strict environmental regulations.

## STAYING SAFE

- Door lockout assemblies included for each zone entry, to protect against worker enclosure.
- Handrail supplied for perimeter of Dryer and cooler section roofs.
- Hot air circulation fan guards supplied, including on v-belt drive guards and rotating fan shafts.
- Guards for power transmission drives on all conveyors.
- The least in-plant fugitive emissions of any Dryer, due to our superior door closure system, door seals, seal welded housing and vented infeed section.
- Safety labels pre-mounted by Westmill™ to warn of dangers and prevent injury at site.