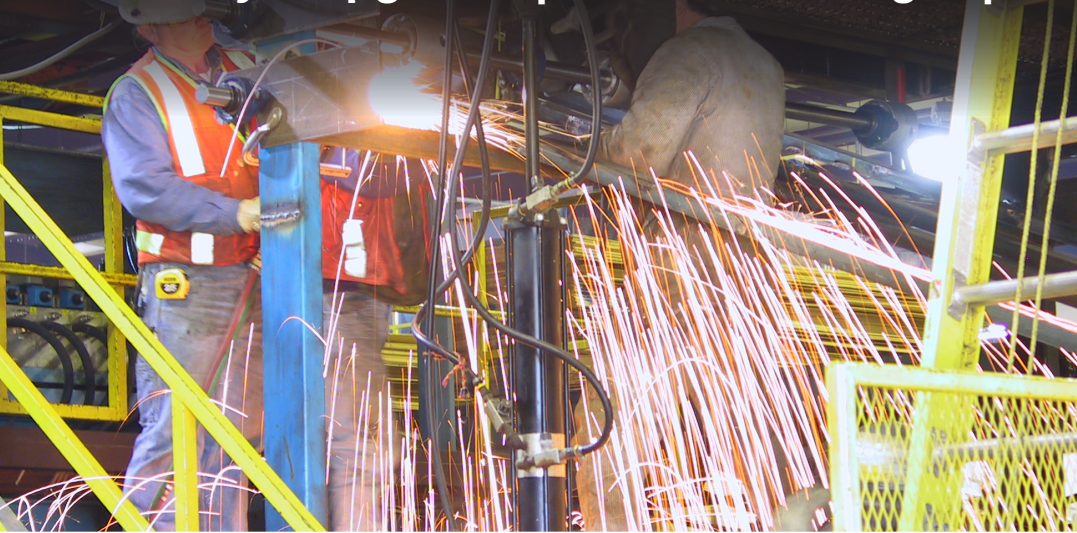


WESTMILL

Serving the Panelboard Industry since 1975

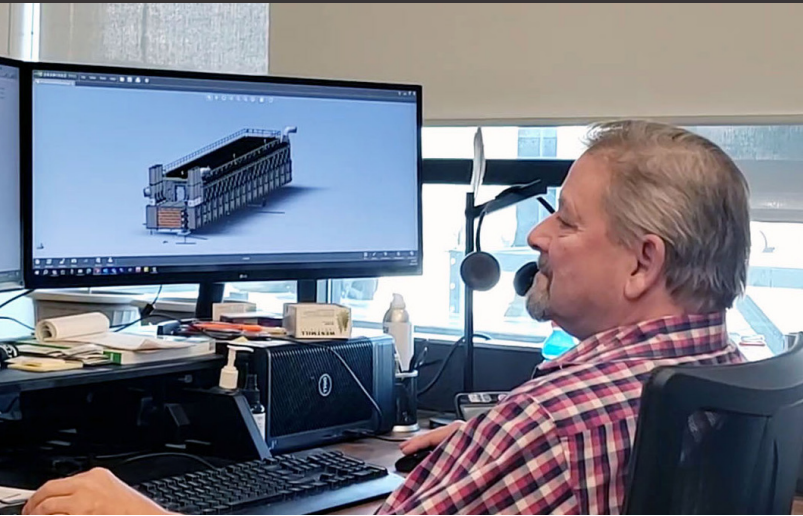
Dryer Upgrades | Innovative Designs | Quality Components



FIBERBOARD & GYPSUM DRYER PARTS CATALOGUE

VERSION 25

The Dryer Guys



Recognized as a leader in board drying technologies, Westmill remodels/rebuilds existing dryers and supplies replacement parts for all makes of dryers. We have the largest inventory of dryer parts in the world at our Abbotsford, BC, Eugene, OR and Atlanta, GA warehouses.

Established in 1975, Westmill Industries started out as a parts manufacturer; supplying critical replacement parts and equipment to the North American panel board manufacturing industries. Nearly five decades later Westmill has grown to become a leader in the design and manufacture of board drying equipment and technologies. We have achieved this by providing quality products, exceptional customer service and innovative engineering.

Westmill continues to flourish, achieving important industry milestones such as installing the industry's first insulated stainless dryer floor (under an existing dryer), and most recently, being awarded the contract to build the **largest-ever veneer dryer in the world**.

Westmill specializes in dryer modification projects and has engineered the rebuild of nearly every style and brand of dryer in existence today. Our award winning and patented technology upgrades will bring your older dryer to a "better-than-new" condition.

"Fair market pricing, no gimmicks or catches. Always the highest quality material & excellent craftsmanship."

James Campbell - Cabot Gypsum



PARTS CATALOGUE TABLE OF CONTENTS

WESTMILL™
Serving the Panelboard Industry since 1975

WESTMILL INDUSTRIES

Westmill History	03
Westmill Patents	04
Westmill Offers	05

CONVEYOR COMPONENTS

Bearing Hangers & Cartridges	07
Chain Hold Downs	08
Chain Windows	09
Sprockets	10
Dryer Rolls	11
Gudgeons	12
Boardbelt Carrying Rollers	13
Expansion Joint Fabric	13
Dryer End Stop-Off Seal	14

**UPGRADE YOUR DRYER WITH
A WESTMILL
TECHNOLOGY UPGRADE
PG. 15**

DRYER DOORS

Replace Your Dryer Doors	17
Dryer Door Design	18
Articulating Door Hardware	19
Westmill Door Hardware	21
Viewing Windows & Sample Ports	22
Safe-Openings Door Handle	23
Replacement Coe Door Hardware	24
Door Seals	25

WESTMILL EQUIPMENT

Expansion Roller Assemblies	27
Upper Duct-Housing Reskinning	29
Burners	30
Stainless Steel Dryer Floor	31
Dryer Pneumatic Chain Tensioner	33
Dryer Drive Tower	34
Circulation Fans	35



The Dryer Guys



'99 | FIRST PATENT

Westmill Articulating Door Hardware.

'99 | FIRST NEW LONGITUDINAL DRYER

Westmill installs their first new longitudinal dryer for Tolko, in Heffley Creek, BC.

'05 | LightSORT™ TECHNOLOGY

Westmill develops the LightSORT™ technology and installs the first system at Tolko's Kelowna Plywood plant.

'10 | INNOVATOR OF THE YEAR AWARD

Westmill is awarded the APA's prestigious APA/EWTA 2010 'Innovator of the Year'.

'20 | WESTMILL MOVES, AGAIN

Expanding in size, Westmill moves to a larger facility in Abbotsford, BC.

'75 | THE BEGINNING

Westmill is established in 1975 by Victor T. Crondahl, father of Mike Crondahl.

1990
MIKE CRONDAHL
JOINS WESTMILL

2002
1ST USA
LOCATION
OPENS

2008
2ND USA
LOCATION
OPENS



1976 -1989 | CANADIAN GROWTH

The company secures exclusive Canadian representation of many US product lines inc: Globe, Sweed, and COE.

1996
MIKE CRONDAHL
BECOMES OWNER

'00 | FIRST EVER INDUSTRY FLOOR RETROFIT

Westmill installs the Plywood industry's first ever retrofit, stainless steel insulated dryer floor at Evans Forest Products in Golden, BC.

'04 | SELL THEIR FIRST 6-DECK JET DRYER

Westmill is awarded their first 6-deck Jet Dryer for West Fraser in Edmonton, AB.

'13 | SUPPLIER OF THE YEAR AWARD

Westmill is awarded the prestigious APA/EWTA 2010 'Supplier of the Year' Award in Materials/Supplies category.

'22 | WORLD'S LARGEST DRYER AWARDED

Westmill is awarded the contract to build the World's Largest Veneer Dryer for Roseburg Forest Products.

'00 | WESTMILL MOVES

Growing in size, the company moves to Langley, BC.



Worlds Longest Veneer Dryer: Roseburg, Coquille over 205 Ft (2,463") in length.



Victor Crondahl, founder of Westmill Industries



CUTTING-EDGE INNOVATIONS SHAPING TOMORROW

WESTMILL remains actively engaged in product development initiatives.

Our innovations have led to some of the best-in-class technologies which are being embraced by our performance minded customers. Westmill is proud of its long-term commitment to innovation, and the results they produce.

WestVac™ Emission & Dryer Seal System

PATENT NO. 10,006,712 B2 **PATENTED**

Westmill's WestVac Emission & Dryer Seal System seals the dryer's end walls to limit emissions from leaking out of the dryer's green and dry-ends, all while maintaining the optimum humidity level inside the dryer.

Quick-Change Dryer Roll Baffle System

PATENT NO. 10,317,138 B2 **PATENTED**

Westmill designed the first-ever, quickly interchangeable Dryer Roll Baffle system. The significant benefit of this innovation is that the existing roll-baffle can be removed and replaced in under 5-minutes, as compared to several hours.

UV-IR Veneer Pre-Conditioning Drying Section

PATENT NO. 11,370,145 B2 **PATENTED**

Westmill has built and tested an IR chamber specifically for veneer drying. The concept involves installing a UV-IR pre-conditioning section at the dryer infeed to quickly heat the bound water (and free water) at the core of the sheet, speeding up the start of the drying process, and therefore improving dryer performance.

2-PEx™ Exhaust & Dryer Humidity Control System

PATENT NO. 11,821,684 **PATENTED**

Westmill's 2PEx™ System provides unparalleled control of the humidity ratio along the entire dryer's length resulting in the BEST veneer quality available from any dryer today.

Impressed Current Cathodic Protection (ICCP)

PATENT NO. 11,193,211 B2 **PATENTED**

Westmill has developed an effective method of virtually eliminating dryer corrosion, using Impressed Current Cathodic Protection Technology and the humidity within a dryer as the electrolyte. Our patented ICCP System is the first-ever system of its kind applied to a veneer dryer.

Westmill Articulating Door Hardware

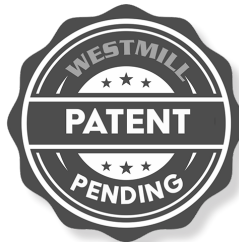
PATENT NO. 6,447,807 **PATENTED**

The Dura-Latch Articulating Door Hardware is the most functional and easily adjustable door hardware available on the market. The design and geometry of the door handle provide for safe, quick and easy opening and closing without strain.

Safe-Openings Door Handle Load-Dampener

PATENT NO. 12,071,786 B2 **PATENTED**

When a conventional dryer door is opened, there is a tremendous amount of force on the handle due to the spring compression of the door seal material. When pulled open, the door seal quickly 'loads-up' the handle with striking force. With the new Safe-Openings door handle load-dampener, the force on the door-handle are controlled when opening. Removing the risk of workplace hazards.



DISCOVER MORE WESTMILL EXCLUSIVE TECHNOLOGY

WESTMILL OFFERS



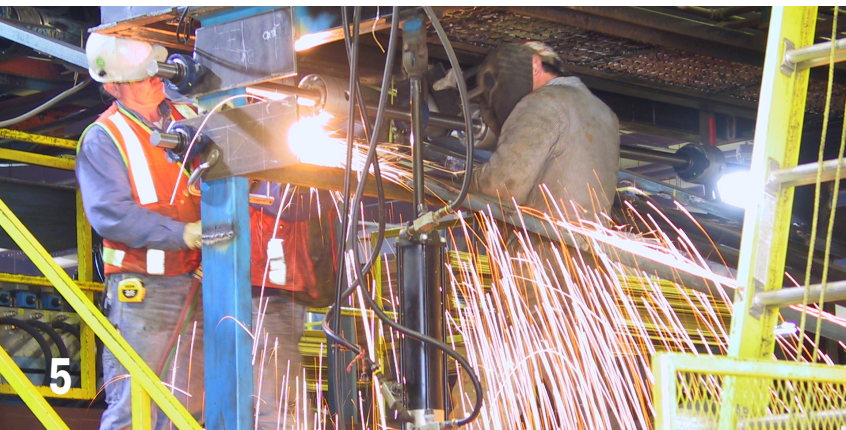
Serving the panel board industry since 1975, Westmill has emerged as North America's leading dryer specialist.

The leader in board drying technologies, Westmill specializes in supplying new dryer systems, dryer technology upgrades, and is the largest stocking supplier of dryer parts in the world. Westmill is committed to providing Dryer Innovations.

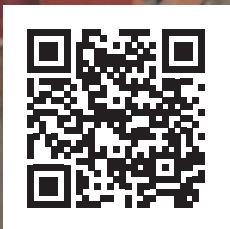
Westmill Offers:

- Customized New Dryers
- Dryer Rebuilds & Upgrades
- Dryer Parts for all Makes & Models (COE, Flakt/Gyptec)
- Inspections & Consulting
- Infeed & Outfeed Equipment
- Exclusive Innovative Technologies

WAREHOUSES IN VANCOUVER, BC | EUGENE, OR | ATLANTA, GA



ASK ABOUT BULK PRICING



SHOP ONLINE | parts.westmill.com

f @ in ▶

BEARING HANGERS & CARTRIDGES

BEARING CARTRIDGES

Available in Copper+ for up to 750°F and Graphite+ for up to 1200°F



BU118



BU38C



BU55



BU99



BU100



BU101



BU411



BU411S

HANGERS & COMPONENTS



WM-100



WM-104



WM-104-B



WM-117



WM-119



WM-119C



WM-125



BU38



EZ CLIP



CLIP LOCK

Westmill supplies all bearing cartridge and hanger types. Contact us if you don't see what you need.

BEARINGS- ROLLING TYPE



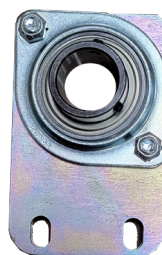
BU27



BU28



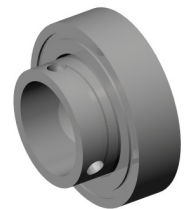
BU30



WM-116C



WM-116D



WEST-135

CHAIN HOLD DOWNS

Chain hold downs keep your dryer chain engaged with the roll drive sprocket and also support the chain along its return path. Our chain hold downs are made from high grade cast iron to provide years of trouble free service.

Westmill also supplies mounting brackets for the chain hold downs, as required.

WESTMILL PART NO.	CROSS REFERENCE
C003	COE 8213
C004	COE PB032002, PC015818, 10979, 7907
C015	COE 10875, 200-1200
C016	COE 10968
C019	Flakt/Gyptech
C021	COEPB028893, 10912, 200-1190
C022	COE 10234, 3545, 200-1210
C023	COE PC035448, 10232, 9440, 200-1170, 025713
C024	COE 105818, 10282, 200-1160, Grenzebach S1602
C025	COE 10501, 200-1150
C026	COE 200-1211
C027	AKI 215843
C028	AKI A-122-1
C029	SK-8013-1
C030	SK-8013-4, X-4012
C031	COE PC032498
C033	COE 10962
C035	Flakt/Gyptech



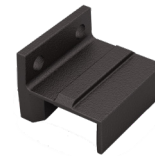
C003



C004



C015



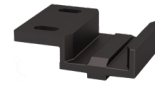
C016



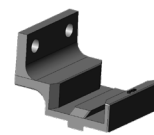
C019



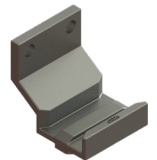
C021



C022



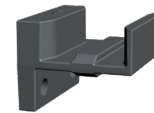
C023



C024



C025



C026



C027



C028



C029



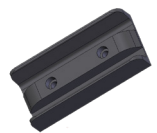
C030



C031



C033



C035

CHAIN WINDOWS

WESTMILL PART NO.	CROSS REFERENCE	PART NAME
C009	COE PA033855, 10866	Split Double Chain Window, 2pc set
C010	COE PB025130, 10867	Single Chain Window, Out, 2pc set
C011	COE PB025131, 10868	Single Chain Window, In, 2pc set
C018	OEM Replacement	Chain Window, Double



C009



C010



C011



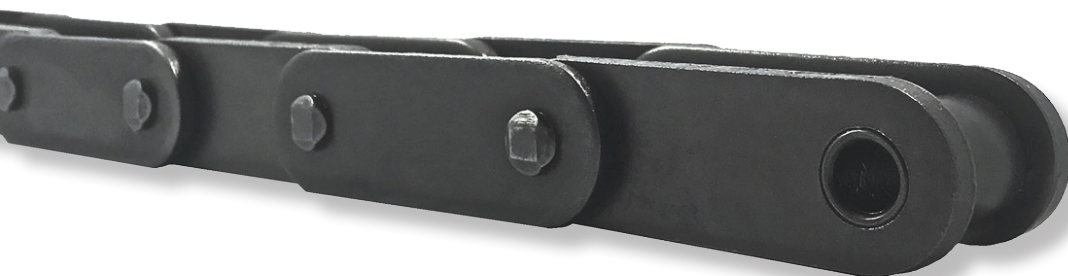
C018

DRYER CHAIN (81X)

We offer several sizes of chain:

- 81X chain: Straight side bar, bushed roller chain
- 81XHD Chain: Heavy duty, straight side bar, bushed roller chain
- 81XXHD Chain: Kiln duty, straight side bar, bushed roller chain
- Connecting links for all of the above chains

CHAIN	DUTY LEVEL	LINK
WEST-81X	81X, Standard Duty	WEST-81XXSD
WEST-81XHD	81X, Heavy Duty	WEST-81XXHD
WEST-81XKD	81X, Kiln Duty	WEST-81XXKD



TEETH	HUB	WESTMILL PART NO.	BORE	CROSS HOLE	KEY WAY	LENGTH THRU BORE	TOOTH WIDTH
HOOK TOOTH (81X) - DRYER							
7	B	SP357	1-1/4"	5/16"	-	2-11/16"	13/16"
7	C	SP356	1-1/4"	5/16"	-	2-7/16"	13/16"
8	B	SP214	1-1/4"	-	3/8"	1.768"	1"
8	B	SP588	1-1/4"	5/16"	-	2-5/8"	25/32"
8	C	SP354	1-1/4"	5/16"	-	3-1/8"	13/16"
8	C	SP221	1-1/4"	-	3/8"	2-1/4"	1"
8	C	SP211	1-1/4"	-	1/4"	2-1/4"	1"
8	B	SP244L*	1-1/4"	-	3/8"	1.743"	11/32"
8	B	SP244R*	1-1/4"	-	3/8"	1.743"	11/32"
8	B	SP245L*	1-1/4"	-	3/8"	1.3"	0.5"
8	B	SP245R*	1-1/4"	-	3/8"	1.3"	0.5"
8	C	SP227	1-1/4"	1/4"	-	2-1/4"	1"
9	C	SP215	1-1/4"	-	3/8"	2-1/4"	1"

DRIVE SPROCKETS (81X) - DRIVE TOWER

8	B	SP730	2-3/16"	-	1/2"	3"	7/8"
8	C	SP840	2-3/16"	-	5/8"	3"	7/8"
8	C	SP225	1-1/4"	-	3/8"	2.25"	0.90"

IDLER SPROCKETS (81X) - CHAIN TENSIONER

8	B	SB400	45mm Ball Bearing	-	-	3"	7/8"
8	B	SZ600	2-3/16" Bronze Brushing	-	-	3"	7/8"
8	C	SZ221	1-1/4" Bronze Brushing	-	-	3"	7/8"
8	C	SP1650	1-1/2" Needle Bearing	-	-	3"	7/8"

* Half sprocket with air holes



SP356



SP221



SP215



SP730



SP840



SP245L*



WE STOCK SPROCKET PULLERS

Safe & Easy Removal

Westmill's purpose-built gear pullers are specific to 81X sprockets. Our pullers make removing sprockets quick and easy.

DRYER ROLLS



COMPLETE ROLL ASSEMBLIES

Westmill manufactures roll assemblies for all dryer makes and models including COE, FLAKT, GYPTECH, AKI

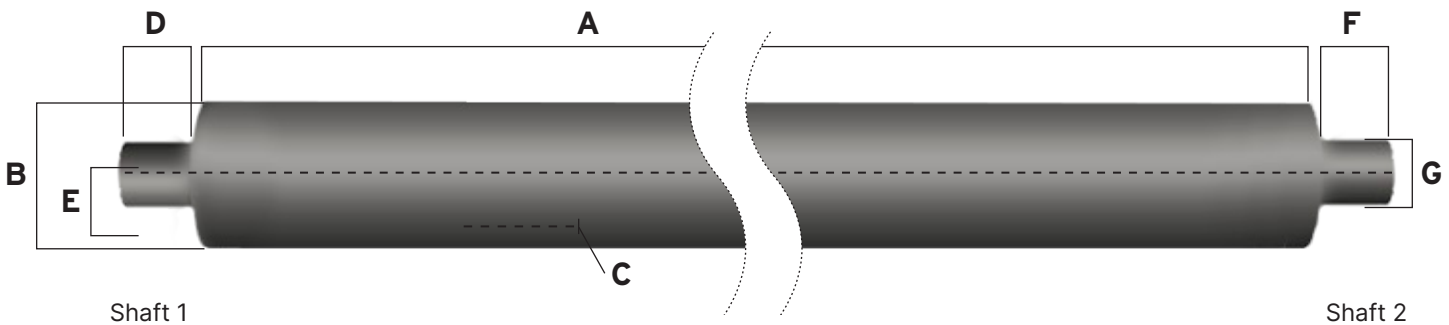
Westmill's pre-assembled and straightened dryer rolls are fabricated to your specification.

Avoid misaligned rolls that cause problematic tracking issues and premature drive-side wear by using our roll assemblies.

Benefits of pre-assembled rolls:

- Eliminates time consuming on-site assembly
- Hydraulically press-fit for accuracy
- Dimple-locked or welded to prevent slippage and guaranteed alignment of gudgeon shaft
- Straightened to 1/16" (0.0625) tolerance

Request a custom roll assembly quote by sending the details below to sales@westmill.com



Dimensions Required:

- A: Tube Length _____
B: Tube Diameter _____
C: Tube Thickness _____
D: Shaft 1 Length _____
E: Shaft 1 Diameter _____
F: Shaft 2 Length _____
G: Shaft 2 Diameter _____

Keyway Information:

- Shaft 1: Type, size, and length _____
Shaft 2: Type, size, and length _____
Material: _____
Location/use: _____

DRYER ROLL TUBING

Westmill supplies roll tubes for all types of dryers, dryer infeeds, outfeeds and sheet-handling conveyor systems.

We can supply any diameter, wall thickness and length you need. We offer quick turnaround for most orders.



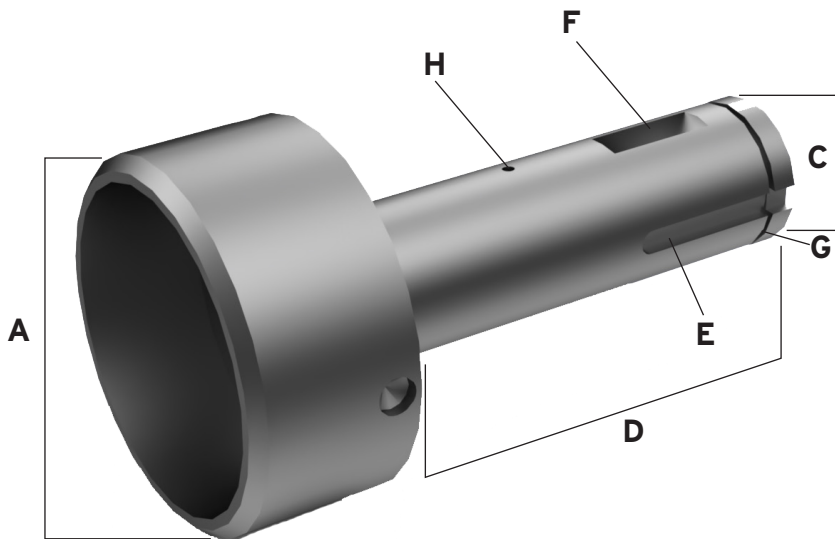
CUSTOM GUDGEONS

Westmill can design and produce any gudgeon you require. Our gudgeons can be designed for any:

- Tube diameter
- Shaft length or diameter
- Style of keyway
- Size or quantity of keyways
- Stepped shaft orientations
- Material; stainless, mild steel or cast iron

Our gudgeons can be tailored to suit your every need.

Request a custom gudgeon quote by sending the details below to sales@westmill.com



Dimensions Required:

A: Bell Diameter _____

B: For Tube ID _____
OD _____

C: Shaft Diameter _____

D: Shaft Length from Bell _____

E: Keyway Length _____ Width _____

F: Woodruff Key Size _____
Distance from Centre to Bell _____

G: Snap Ring Groove _____

H: Pinhole Size _____

Distance from Centre to Bell _____

Dryer Make: _____

Gudgeon Location: _____

CAST STEEL BELL HOUSING



Westmill's cast steel bell housings provide you the flexibility to make you own gudgeons in-house. The design allows you to incorporate a removable shaft, saving you costs on replacement gudgeons and roll assemblies.

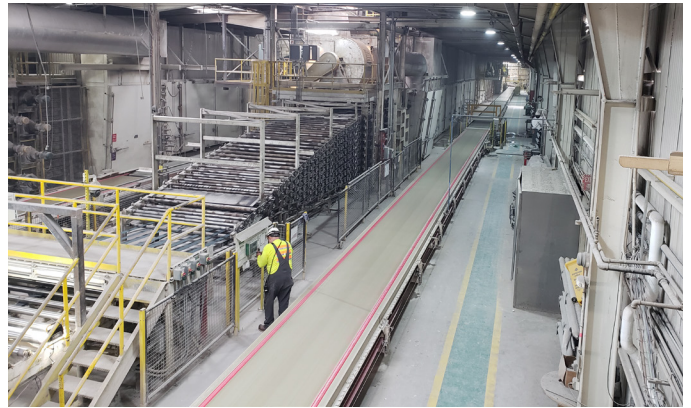
Our pre-made bell housings are designed to fit 3" OD x 0.120" wall tubes and other standard dryer tube sizes.

DRYER ROLLS

BOARDBELT CARRYING ROLLERS

Westmill understands the importance of having precisely straightened, custom-made rollers for carrying the board belt. We have manufactured thousands of replacement boardbelt rollers to meet the stringent roll straightness requirements of this process.

Please contact sales@westmill.com for a quote today.



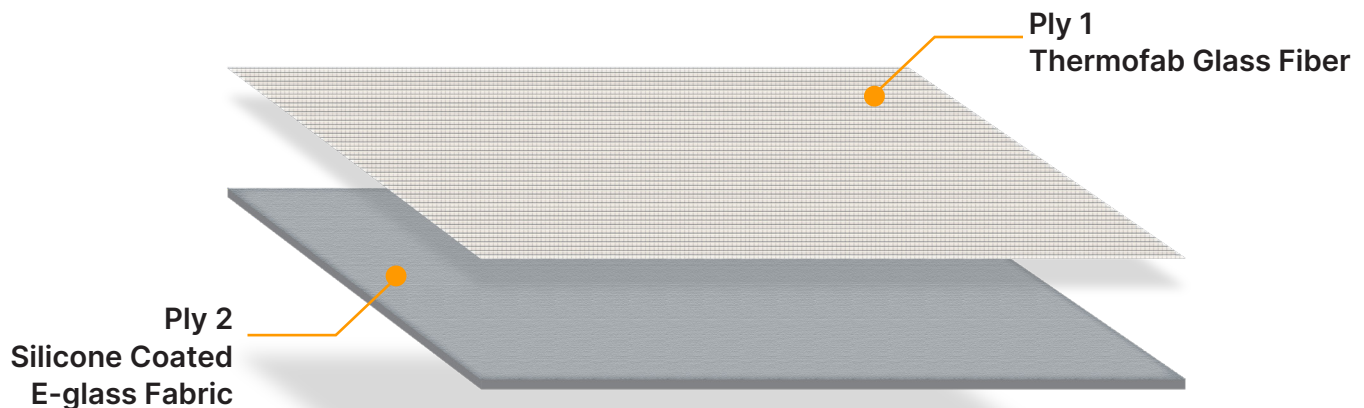
EXPANSION JOINT FABRIC

Two Ply material custom sized to your requirements

- Ply 1 is Thermofab glass fiber; 1/8" thick, acid, alkalis and solvent resistant with a service temperature of 1000°F (538°C).
- Ply 2 is a silicone coated e-glass fabric; 0.017", does not burn or support fire, cannot be penetrated by oils or residues, and is a better thermal barrier than glass woven fabric alone.

The two plies are stitched together using Kevlar/SS thread. Westmill can offer two options for your stitching style:

1. Stitched but not hemmed
2. Stitched and hemmed



Other materials available upon request, please email sales@westmill.com

DRYER END STOP-OFF SEAL

Westmill's Dryer End Seal creates an airtight seal, eliminating the plug-up issues commonly associated with mechanical pinch rolls. It can be used on both the wet and dry ends of the dryer and can be installed as a double seal for enhanced airtightness when needed.

The seal-holding bracket makes swapping out the seal blades quick and easy minimizing downtime and maintenance costs. The seal also features a durable PTFE-impregnated fiberglass wear strip that gently and evenly contacts the board surface protecting the quality of your product.

- ✓ ENERGY EFFICIENT
- ✓ GENTLE ON BOARD
- ✓ EASY TO INSTALL
- ✓ EASY TO MAINTAIN



Is outdated dryer technology effecting production?

WESTMILL DRYER TECHNOLOGY UPGRADE

With a Westmill Dryer Technology Upgrade, bring your dryer back to "better-than-new" condition. All components necessary to upgrade your system are engineered and supplied by Westmill exclusively. By re-using components such as the conveyor, framework, and other parts, will provide a significant savings versus a new build.

Benefits of a Technology Update:

- Increased Dryer Production
- Reduced Energy Usage
- Improved Product Quality
- Reduced Downtime
- Reduced In-plant Emissions



LEARN MORE TODAY! www.westmill.com



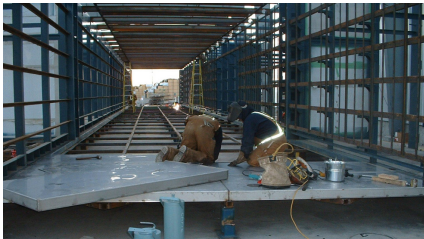
DRYER TECHNOLOGY UPGRADE COMPONENTS:

Before you make the decision to replace your old dryer, consider a Westmill Dryer Technology Upgrade. Your rebuilt dryer will look and operate like new for a fraction of the cost.

As dryers age, they begin to leak, maintenance costs rise and more energy is required to keep them at the target temperature. The Westmill Dryer Technology Upgrade offers an economical solution as an alternative to purchasing a new dryer.

*Your dryer will look and operate
"BETTER-THAN-NEW"
for a fraction of the cost.*

CHOOSE FROM THE FOLLOWING TECHNOLOGY UPGRADES:



Dryer Floor System

Mild or stainless steel insulated floor panels are seal-welded together, creating one continuous dryer floor.



Door Cartridge System

Replacing your old dryer doors will reduce your energy demand thus reducing your overall dryer operating costs.



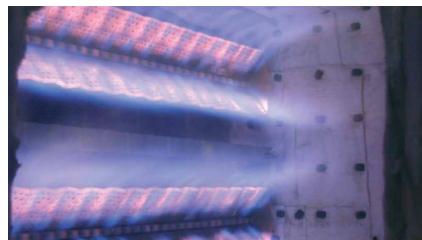
Seal-Welded Upper Housing

We will replace your entire dryer upper housing. The new housing will be completely insulated, seal-welded & re-skinned.



Seal-Welded Fan Module

Well insulated, seal-welded fan modules ensure a leak-proof and efficient dryer.



Heating System

We offer a variety of Standard and Low NOx gas burner solutions for our technology upgrade customers.



Quality Components

Westmill will provide ALL the quality components necessary to completely upgrade your entire dryer.

DRYER DOORS

REPLACE YOUR EXISTING DRYER DOORS



BEFORE

DURING

AFTER

Increase your dryer's production and efficiency by replacing leaky dryer doors that are draining your company's profitability with the Quick-Install Door Cartridge System from Westmill.

Our dryer door system is second none. With over 8,000 sets of tight sealing doors, featuring our patented articulating door hardware installed in mills around the world. Our door systems prevent heat loss, reduce emissions and increase productivity wherever they are installed.

Upgrading your dryer doors provides substantial benefits. Poorly sealed doors allow hot air to escape from the positive side of the dryer, causing cold air to be drawn into the dryer on the negative side. This leads to increased and unnecessary energy consumption, driving up operating costs and significantly extending drying times for your products.

By transitioning to Westmill's state-of-the-art door cartridges featuring our advanced seals and insulation system, you will effectively combat heat loss. This upgrade will enhance your dryer's thermal efficiency, ensuring that more heat and humidity stays inside the dryer where it belongs. As a result, you'll experience savings on heating expenses while optimizing the drying conditions. In addition, the new doors will minimize in-plant emissions, promoting a safer, more environmentally friendly workplace.

Our replacement door cartridges are designed for easy and efficient installation, simplifying both the removal of existing doors and the installation of new ones. The design of the Single Door Cartridge

System allows for a swift installation process by seal welding our heavy wall tubing directly to the existing dryer frame. The heavy tube door frame provides a completely straight and very robust door seal surface.

Our new "Quick-Change" stainless steel door seal System 1-2-3™ is provided for each door opening. The door seal retainer track comes pre-installed from the factory, while the seal itself is shipped separately to prevent any damage during handling and installation.

Don't miss out on these advantages—enhance your dryer's performance and cut costs with our upgraded door solutions today!

SAVE TIME!

QUICK-INSTALL DOOR CARTRIDGE

Replace leaky dryer doors that are draining your profitability with Quick-Install Door Cartridge Systems from Westmill.

This airtight installation will:

- Prevent heat loss
- Reduce emissions
- Improve efficiency
- Lower your overall operational costs



DRYER DOOR DESIGN

Westmill can custom manufacture dryer doors to fit any and all makes and sizes of dryers. They are meticulously crafted to allow for quick door replacement during routine maintenance, minimizing downtime and optimizing operational continuity for your facility.

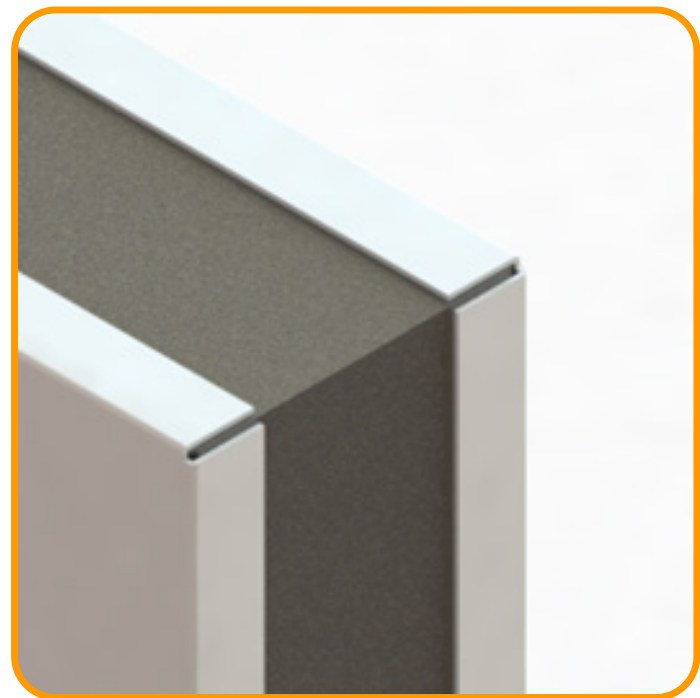
Westmill dryer doors are manufactured with the following specifications:

Standard:

- 16-gauge 304 stainless steel door skins on both sides
- Strong structural steel interior framework
- Robust mountings for door hardware
- Easy installation
- Standard doors are 5" thick using 8-lb. Density Mineral Wool Board within
- 3", 4" or 6" thick doors are also available
- The two individual sheets of insulation inside the doors are overlapped to eliminate any chance of heat-transfer between gaps in the insulation
- The R-value of our mineral wool insulation is 4.2 per inch – the highest available
- Welded nuts to allow for the use a lifting eye to mount the doors

Other Options:

- Westmill's patented articulating door hardware
- Painted mild steel door skins.
- Hole patterns to fit any OEM dryer
- Viewing windows
- Sample ports



Stainless Steel Door Skin is welded to the door frame.

DOOR HARDWARE



WESTMILL ARTICULATING DOOR HARDWARE PATENT NO. 6,447,807

Westmill's Patented Articulating Door Hardware is the most functional and easily adjustable door hardware available on the market, **with over 8,000 sets in operation today!**

Our door system sets a new standard in the industry, combining secure sealing, ease of operation, and enhanced operator safety.

The Westmill Patented Dura-Latch Articulating Door Hardware features an innovative articulating hinge system that enhances both efficiency and safety during use. When the door is released, it initially pulls straight out approximately ½ inch before smoothly rotating. Upon closing, the door rotates into place and when the handle is closed it securely and uniformly seals around the entire door seal surface, ensuring a tight and complete closure. This design not only maintains optimal seal pressure but also minimizes wear and tear on the door seal, thereby extending its lifespan.

For maximum sealing effectiveness and operational safety, each door is equipped with four latch points for robust closure. This multi-point latching system reinforces the seal, providing superior strength and reliability. Furthermore, the door hardware is adjustable to maintain a consistent seal at each latch point, ensuring long-term performance and reliability.

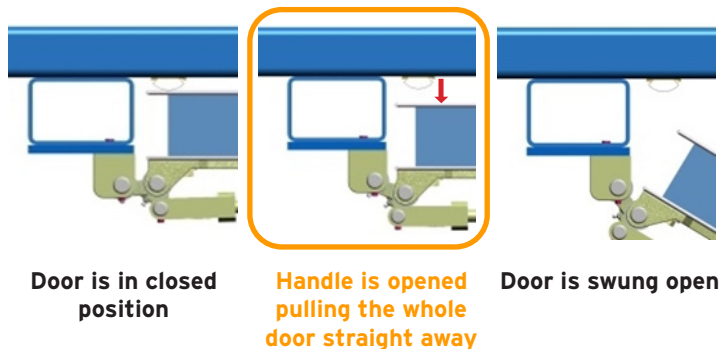
The Westmill Dura-Latch™ door hardware handle is designed for safe, quick, and effortless opening and closing, eliminating the need for time-consuming door hinge-side shimming and seal adjustments.

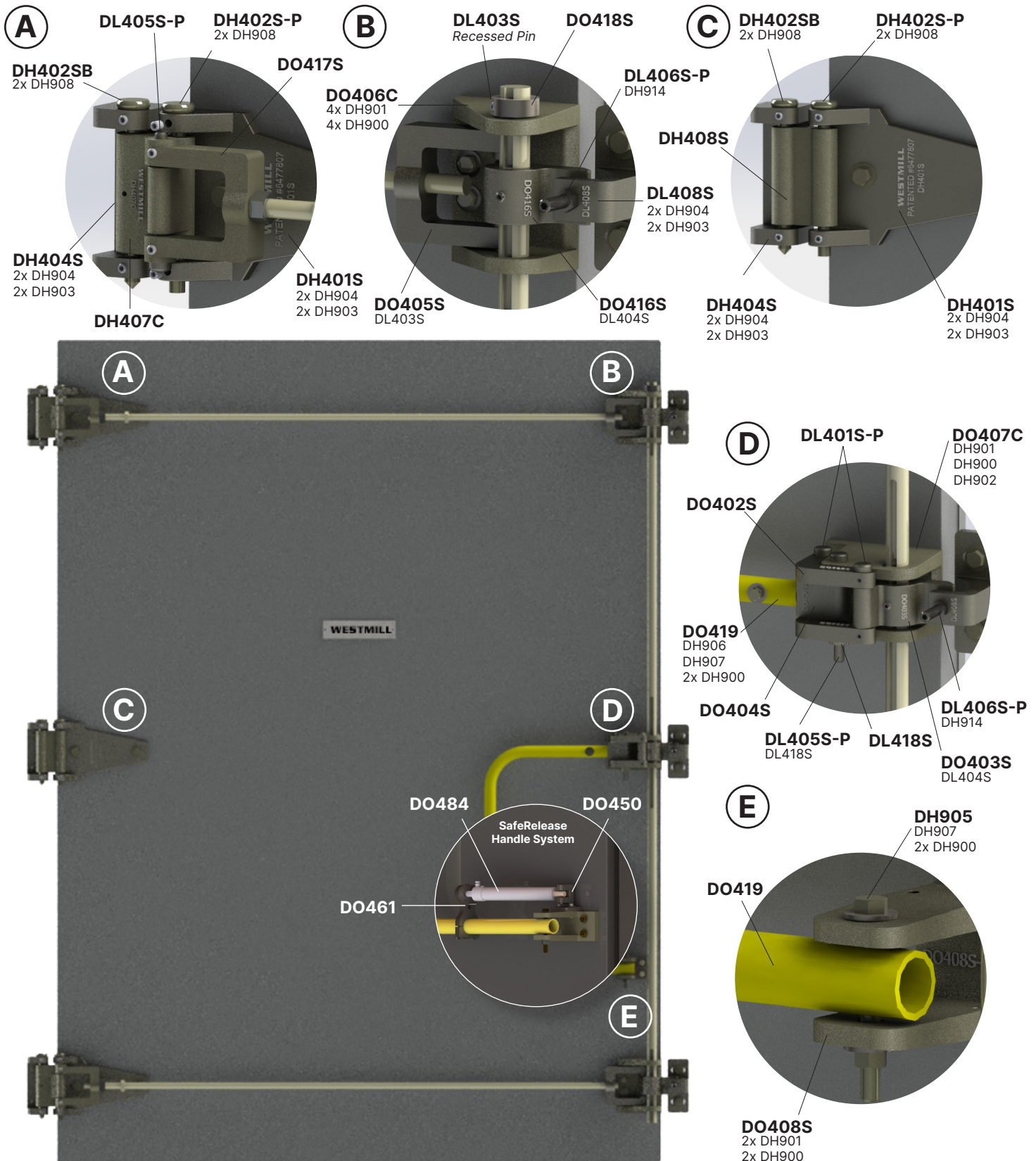
Adjusting the door seal contact pressure is straightforward: simply turn the horizontal cross rods on the hinge side to achieve the desired tension. For the latch side seal pressure, adjust by tightening or loosening the latch contact bolts. These adjustments can be made even while the dryer is in operation.

The addition of grease fittings on the hinge pins prevent hinges from seizing in the challenging dryer environment, ensuring continuous smooth operation over time.

Contact us today to experience the reliability and functionality of our industry-leading door system!

Door operation with Articulating Door Hardware:

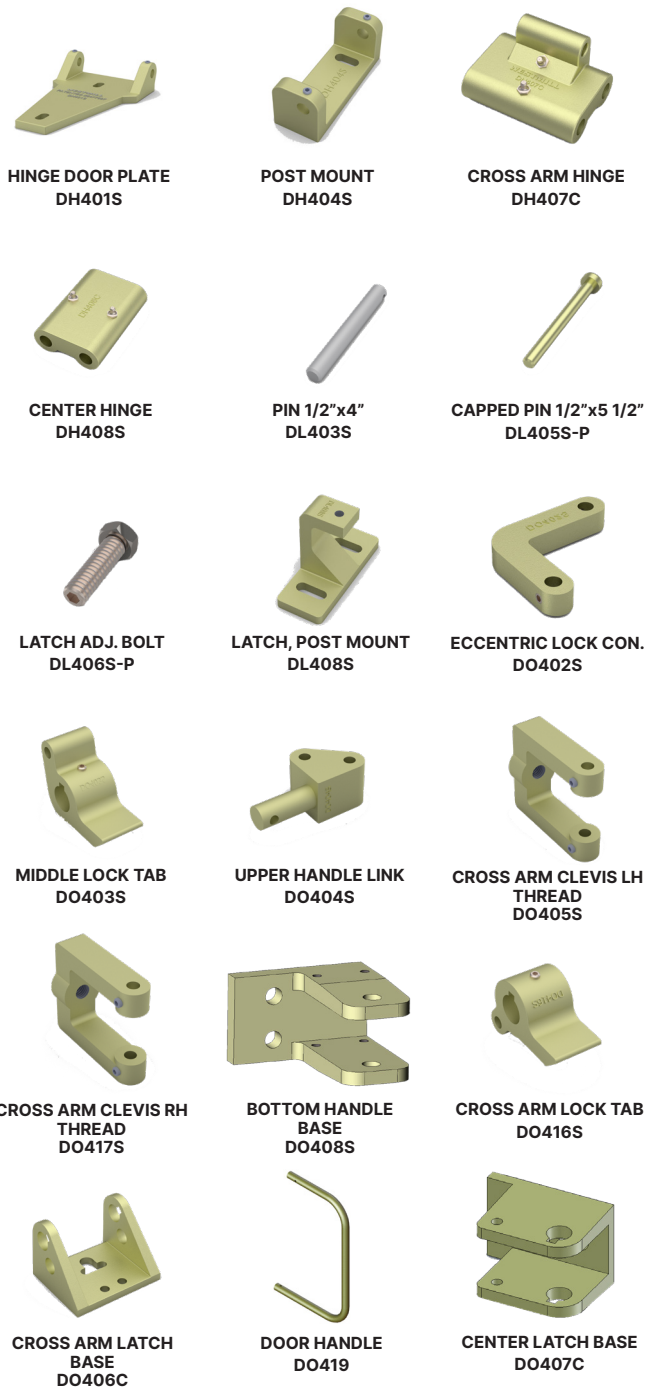




DOOR HARDWARE

WESTMILL DOOR HARDWARE

WESTMILL PART NO.	QTY.	PART NAME
DH401S	3	Hinge Door Plate
DH402S-P	3	Capped Pin, Flat-Bottom 5/8" X 7"
DH402SB	3	Capped Pin, Bullet Bottom 5/8" X 7"
DH404S	3	Post Mount, Single
DH407C	2	Cross Arm Hinge
DH408S	1	Center Hinge
DO448	2	Cross Arm Rod Assembly
DL401S-P	2	Capped Pin 1/2" x 3 1/2"
DL403S	2	Straight Pin 1/2" x 4"
DL405S-P	3	Capped Pin 1/2" x 5"
DL406S-P	3	Latch Adjustment Bolt
DL408S	3	Latch, Post Mount
DO402S	2	Eccentric Lock Connector
DO403S	1	Middle Lock Tab
DO404S	1	Upper Handle Link
DO405S	2	Cross Arm Clevis LH Thread
DO417S	2	Cross Arm Clevis RH Thread
DO406C	2	Cross Arm Latch Base
DO407C	1	Center Latch Base
DO408S	1	Bottom Handle Base <i>(Load-dampener Ready)</i>
DO415	1	Vertical Main Shaft
DO416S	2	Cross Arm Lock Tab
DO419	1	Door Handle



DOOR ASSEMBLY	
DOOR HARDWARE FULL BASE KIT	WM-DHW-1
DOOR HANDLE LOAD-DAMPENER KIT	WM-DHW-A
FULL BASE & DOOR HANDLE LOAD-DAMPENER KIT	WM-DHW-D


VIEWING WINDOWS & SAMPLE PORTS

Westmill can provide dryer doors equipped with viewing windows and sample ports, enabling convenient monitoring of your product throughout the drying process. The viewing windows feature Borosilicate Glass, a robust material known for its high-heat tolerance and resistance to breakage. Its composition of silica and at least 5% boron oxide. Ensures exceptional durability and chemical resistance, making it ideal for industrial applications.


Our viewing windows are available in two configurations: welded into the doors for permanent installation or hinged and latched so that the window can be opened and closed.

In addition, we offer custom-cut Borosilicate glass replacements tailored to fit any size of existing viewing window.

We provide an additional feature to optimize operational efficiency: dryer doors with 2" diameter test ports. There is one test port per deck enabling precise measurement of airflow and pressure inside the dryer. This capability allows for accurate monitoring and fine-tuning of drying conditions, ensuring optimal performance and product quality.



Add sample ports to the doors, so that you can measure the pressure and airflow inside the dryer. Each deck will have its own sample port, typically a 2" NPT pipe with a heavy-duty screwed-in plug. This design allows for easy opening and closing while providing a secure seal.



Add viewing windows to our doors to gain a better insight into your drying process. These windows can be made to open or permanently welded into the door.

Constructed from borosilicate glass, our windows offer exceptional thermal resistance, long-lasting durability, and superior optical clarity. They are also highly resistant to abrasion and scratches, making them perfect for this demanding application.



DOOR HARDWARE

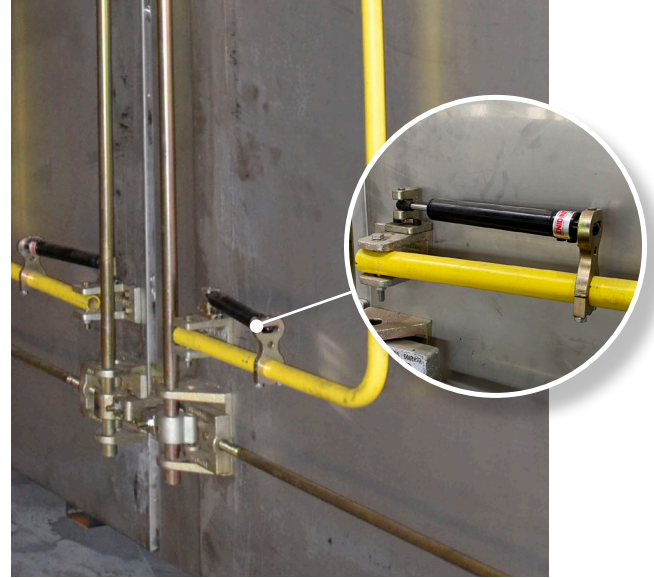


SAFE-OPENINGS DOOR HANDLE PATENT NO. 12,071,768

A recent innovation by Westmill is the development of our Safe-Openings door handle load-dampener.

When a conventional dryer door is opened, there is a tremendous amount of force on the handle due to the spring-compression of the door seal material. As soon as the door handle opens beyond the self closing position, the force of the compressed door seal quickly loads force onto the handle.

By contrast, when a dryer door equipped with Westmill's "Safe-Openings" load-dampener is opened, the force of the door handle is completely controlled and simply does not create a human strike hazard.









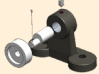




	WESTMILL PART NO.	QTY.	PART DESCRIPTION
	DH950	2	Washer, Lock, 1/4" Dia, 1/16" thick, 1/2" OD, Mechanical Zinc Finish
	DH931	2	Cap Screw, Socket Head, 1/4"-20 UNC x 1" Lg, Gr5
	DL486	2	Pin, Clevis, 1/4" x 1-9/16" Usable Length
	DL490	2	Pin, Cotter, Cylinder, 1/16" x 1" Lg
	DO484	1	Rate Control Cylinder
	DO484C-01	1	Bottom Handle Base, Door Hardware
	DO461	1	Cylinder Clamp, 1" ID Mount, w/Hardware, for Rate Controller
	DO450	1	Clevis, Mounting, for Door Rate Control Cylinder, Cast

REPLACEMENT COE DOOR HARDWARE

Westmill offers a comprehensive inventory of replacement COE door hardware, with extensive stock available across our three warehouses.

Enjoy rapid turnaround times for all your needs, from cam handles and hinges to latch rollers and other essential components. Trust us to keep your COE Doors in top condition with our swift and reliable service.



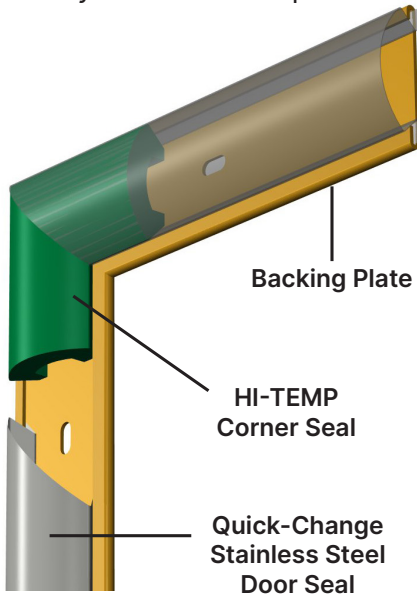
	PART NO.	CROSS REF. NO.	NAME
	DH101	CP009916 , PC090679	Single Hinge Butt
	DH102	CP007914A , PC0312820A	Hinge Strap
Custom	DH205	Moore , RD-14B, PC-080539	Hinge Block
	DL101	CP009812 , PC030058	Cam Roller Block
	DL102	-	Latch Roller Pin
	DL103	-	Latch Roller
	DL104	COE 9810	Latch Shoulder Bolt
	DL105	COE 9812	Latch Roller Block Assembly
	DL106	-	Shake- proof Washer
	DO101	CP009915 , PB014962-B	Cam Handle, left
	DO102	CP009914, PB014962-A	Cam Handle, right
	DO103	DL405S-P & DO103	Hinge Pin 1/2" diameter x 4" long"

DOOR SEALS



QUICK-CHANGE DOOR SEAL SYSTEM 1-2-3™

Westmill's **Quick-Change System 1-2-3™** Dryer Door Seal System is a superior and cost effective solution to seal your dryer. **System 1-2-3™** incorporates a stainless steel "D" profile seal that quickly and easily attaches to a permanent backing plate that is affixed to your dryer door frames.



COST:

First-time installation: Same cost as tadpole seals
Future replacement: Half the cost of tadpole seals

INSTALLATION TIME:

Tadpole seal installation: Over 2 hours/Door
Quick-Change System 1-2-3 seal: Only 5 minutes/Door

Unlike typical tadpole seals, the stainless **Quick-Change System 1-2-3™** seal can withstand direct exposure to nuisance fires.

High-temperature silicone corner seals provide a leak-free corner joint and a perfect fit of the stainless seals.

**First-time install:
 4 easy steps.
 Repairs & changes
 in just 5 minutes!**



1. Mount backing plate



2. Apply red silicone under backing plate



3. Insert stainless steel seal & corner seal



4. Finished System 1-2-3

WESTMILL PART NO.	DESCRIPTION & LENGTH
STAINLESS DOOR SEAL	
WEST-335	72" Stainless Steel Door Seal
WEST-333	78" Stainless Steel Door Seal
WEST-332	96" Stainless Steel Door Seal
WEST-331	120" Stainless Steel Door Seal
WEST-327	144" Stainless Steel Door Seal
CORNER SEAL	
WEST-326	Silicone Corner Seal
BACKING PLATE*	
WEST-334	72" Mild Steel Backing Plate
WEST-330	96" Mild Steel Backing Plate
WEST-329	120" Mild Steel Backing Plate
WEST-328	144" Mild Steel Backing Plate

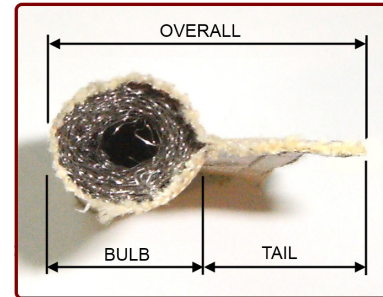
*Backing plates available in stainless steel.

TADPOLE-STYLE DOOR SEAL

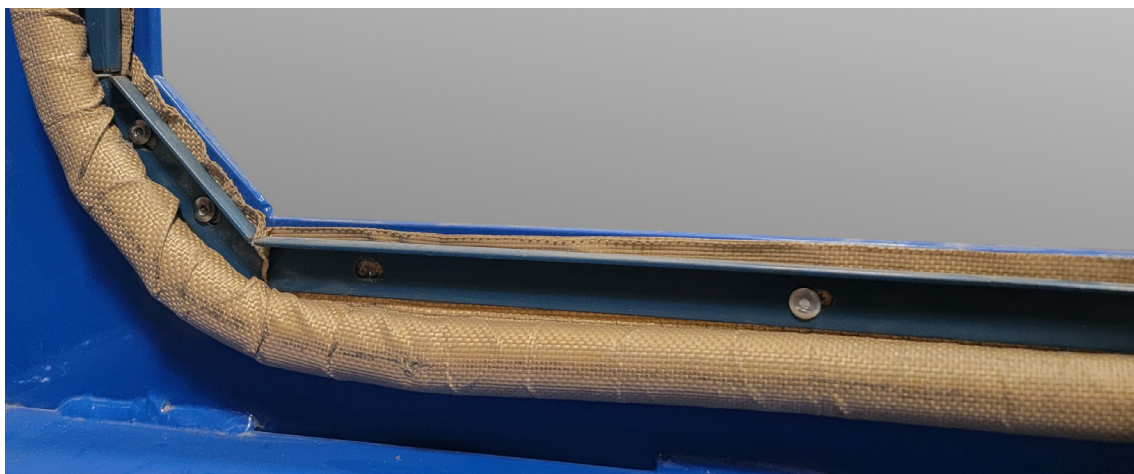
Tadpole seals are recommended for old uneven doors and door frame surfaces.

- Stainless mesh core conforms to the irregular surfaces
- Suitable for all dryer temperatures and heat types
- Made from non-asbestos material
- Chemical resistant

Contact our sales team for more custom sizes & materials.



	WESTMILL PART NO.	BULB DIAMETER	TAIL	JACKET
	WEST-303B	3/4"	1"	Teflon Coated Fiberglass
	WEST-303B1	1"	1-1/4"	Teflon Coated Fiberglass
	WM-303K	3/4"	1-1/8"	Teflon-Coated Kevlar
	WEST-400	7/8"	5/8" x 2"	Teflon-Coated Kevlar
	WEST-732	7/8"	11/16" x 2"	Silicone-Coated E-Glass
	609-573538	3/4"	1"	Fiberglass Jacket, Rope Core
	609-573539	3/4"	1"	Fiberglass Jacket, Stainless Steel 304 Core



SEAM TAPE & HIGH-TEMP ROPE

A wide variety of sizes and thicknesses PLUS an extensive selection of materials available.

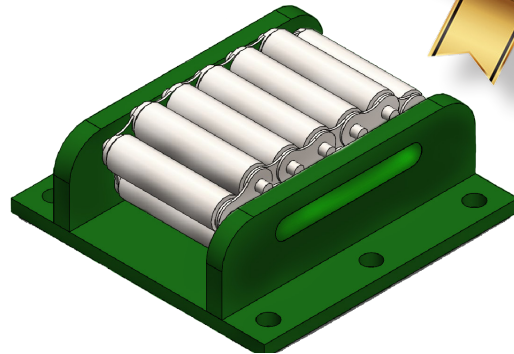


EXPANSION ROLLER ASSEMBLIES



HIGH CAPACITY STEEL CIRCULATING EXPANSION ROLLER

Westmill's exclusive Expansion Rollers feature securely captured HD rollers, ensuring they remain firmly contained within their housing. These rollers can withstand high static loading over a longer period of time. Made of high-strength steel and built to move, these rollers are ideal even for the heaviest dryer application.



EXPANSION ROLLER ASSEMBLIES

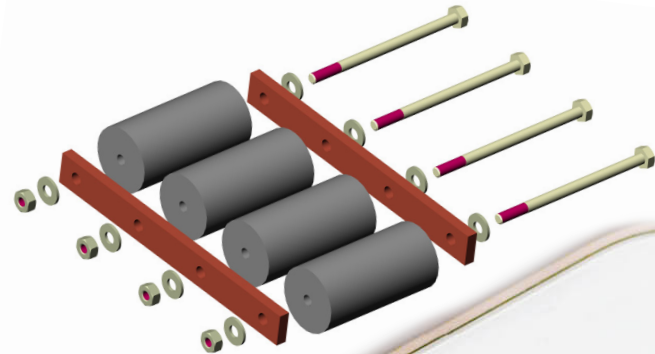
Westmill's OEM style expansion roller assemblies will keep your dryer straight and in-line. Easily and quickly retrofitted to any dryer, they are self-guiding and require no maintenance.

Our OEM expansion roller assemblies are designed to be as compact as possible. If your current roller assemblies are taller, simply shim the new Westmill expansion rollers to suit. Field mounting is easy - simply anchor to existing concrete using our optional pre-drilled mounting holes, or weld to existing steel foundation plates.

Our expansion rollers are designed to be directly interchangeable with OEM parts.

General specifications:

- Overall height: 2-3/4"
- Top and bottom plates: 5/8"-thick steel plates
- Base plate dimensions: 8 " wide by 14 " long (along roller axis)
- Roller diameter: 1-1/2" steel



**FOLLOW US ON
SOCIAL MEDIA &
SUBSCRIBE TO OUR
YOUTUBE CHANNEL**



SCAN QR CODE
Let's stay connected



DRYER INSPECTIONS OPTIMIZE YOUR DRYER

Providing professional & objective insight into your dryer.

Westmill performs on-site dryer inspections, helping identify opportunities for production increases and energy savings, providing an immediate payback on your investment.

Westmill Inspection Benefits:

- Maximize Production
- Reduce Emissions
- Reduce Energy Usage
- Increase Uptime
- Improve Product Quality



LEARN MORE!



WESTMILL EQUIPMENT

UPPER DUCT-HOUSING RESKINNING

An aged, leaky upper dryer housing can drastically impact your dryer's efficiency and performance.

Investing in a new, replacement upper duct will provide an immediate return on your investment by enhancing efficiency, lowering heat requirements, and boosting production while reducing the incidence of fires.

- 1. Seal-Welded Upper Housing:**
Provides a robust, durable, and airtight seal that maximizes heat retention and efficiency.
- 2. Panelized Upper Housing:**
Offers a flexible, easy-to-install solution that delivers exceptional performance.
Contact our sales team for more information.



No-Leak, Seal-Welded - Upper Housing System:

This system is engineered to minimize heat loss and reduce energy costs by effectively eliminating metal-to-metal contact between the inner and outer walls of the dryer's roof and siding.

The structural interior framework is built from heavy steel tubing. The roof-top (hot box) interior walls and ceiling are attached to this framework using 12-gauge steel sheets, which are completely seal-welded, creating a fully leak-proof environment within the upper dryer housing.

8-lb mineral wool board insulation is installed, with 6" thickness in the dryer roof and 4" thickness in the upper sidewalls. The exterior cladding is corrugated stainless steel, designed to prevent condensation build up within the dryer housing walls. Westmill's cladding installation method ensures that water runs off the roof, flowing down the walls without contacting the insulation.

Before securing the outer metal sheeting onto the framework, an insulating strip is placed on the supporting structural steel member to act as a thermal break. This way the only metal-to-metal contact between the inner 'hot-box' and the exterior walls and roof cladding occurs through the fasteners used for material installation.

Westmill's dryer housing is actually 'cool to the touch', setting it apart from any other dryer housing available today.



Seal-welded inner cladding



Insulation



Stainless steel outer cladding

BURNERS

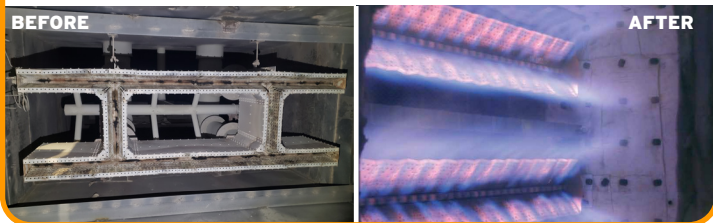
Westmill offers fully engineered burner solutions:

- Replace your existing burners with new state-of-the-art models
- Convert your dryer to gas heating

Our extensive experience includes working with major burner manufacturers and models, such as Eclipse, Maxon, and more. Low and Standard Nox available.

We also offer comprehensive burner inspection and tuning services.

UPGRADE YOUR OLD BURNERS FOR NEW



Large
Viewing
window



Westmill Dryer - Low NOx Gas Train

WESTMILL EQUIPMENT

STAINLESS STEEL DRYER FLOOR



Westmill was the first company to install an insulated stainless-steel floor under an existing board dryer way back in 1999. Today, Westmill has installed more insulated floors under new and rebuilt dryers than any other company.

What are the advantages of an Insulated Steel Dryer Floor?

- **Improved Drying Efficiency:** Concrete floors act as significant thermal heat sinks, whereas a steel floor does not.
- **Easier Clean-Up:** A smooth, insulated steel floor simplifies clean-up compared to a pitted concrete floor. Debris can be easily washed out over the smooth steel surface.
- **Cleaner Plant Air:** Improved sealing at the bottom of the dryer prevents fugitive emissions from escaping into the plant, leading to cleaner plant air.
- **Eliminate concrete floor damage for good.**
- **Reduce incidence of dryer fires** by eliminating oxygen intake.
- **More Uniform Heat Distribution:** The heat in the dryer becomes much more uniform from top to bottom with an insulated floor. This leads to more predictable operation and more even temperatures throughout, resulting in more consistent drying conditions.
- **Reduced Maintenance & Downtime:** You will never again have to shut down and re-grout around the expansion roller area, replace expansion roller assemblies, re-shim the dryer framework.
- **Fewer Jam-Ups:** The incidence of dryer jam-ups will be reduced. As concrete expands and contracts it breaks apart. Eventually, expansion rollers become out of level and the dryer frame and rolls begin to slope preventing the veneer from tracking properly. With an insulated floor concrete deterioration will not occur allowing your dryer to remain level and your board to run straight.

DETAILS OF WESTMILL'S INSULATED FLOOR DESIGN:



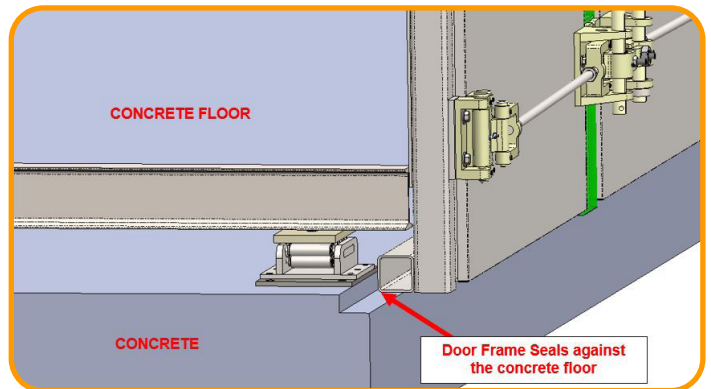
Floor Panels: Westmill dryer floors are manufactured with stainless steel (2-sided) insulated panels for maximum longevity. The panels are insulated with 8 lb. mineral wool insulation.

Expansion Rollers: Westmill's exclusive design of Expansion Rollers have captured Heavy-Duty rollers that cannot escape from their housing. These rollers can withstand high static loading over a long period of time. Made of high-strength steel and built to move, these rollers are ideal for the heaviest board dryer application.

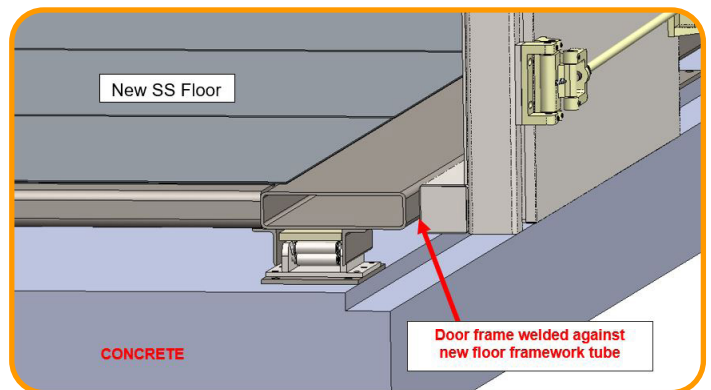


REPLACE YOUR DRYER DOORS AT THE SAME TIME AS YOUR FLOOR

When a dryer floor is upgraded from concrete to a stainless-steel floor, the existing doors and door frames are also replaced with slightly smaller height cartridges to allow them to fully seal up to the new floor.



Typical



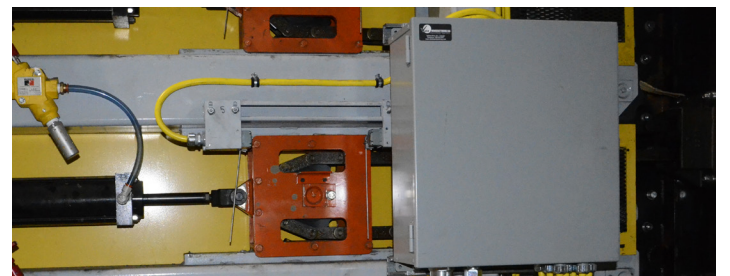
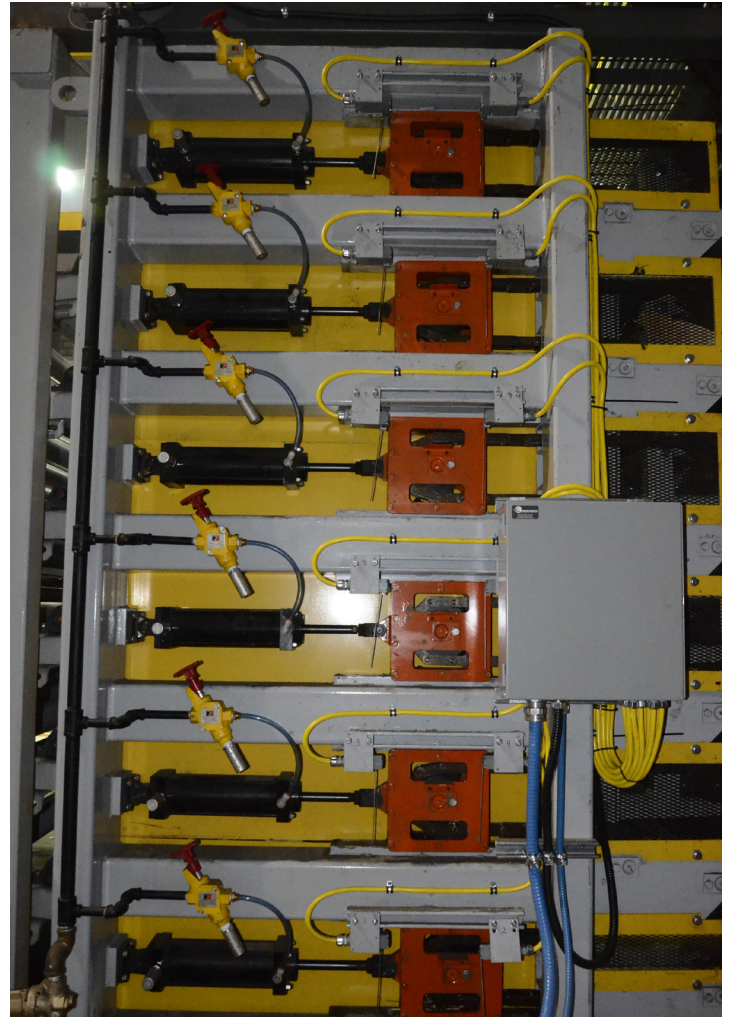
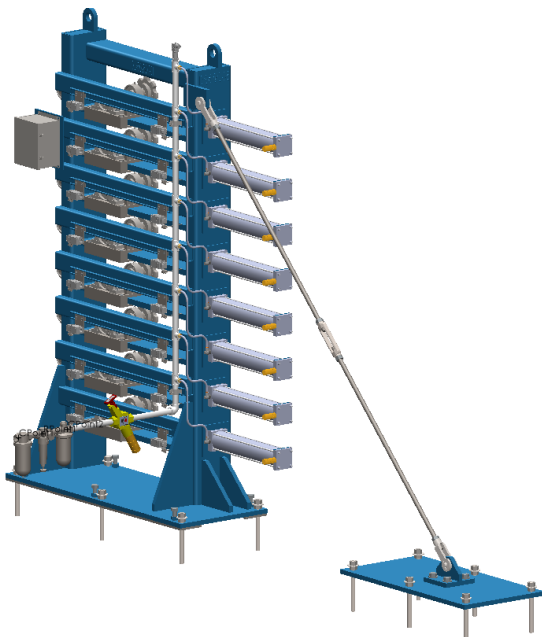
After

DRYER PNEUMATIC CHAIN TENSIONER

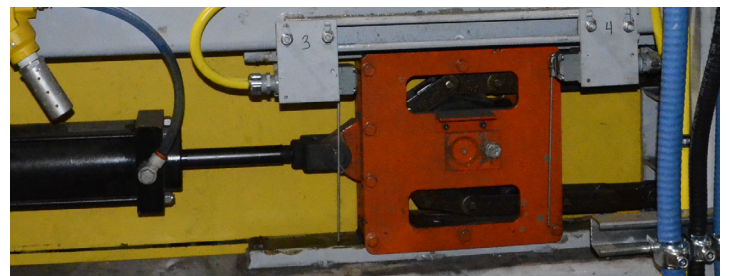
Westmill's Dryer Pneumatic Chain Tensioner keeps the dryer chains tight and prevents binding. Constant chain tensioning along with automatic detection of chain break and jam-up make our chain tensioner an effective solution.

Chain Tensioner Features Include:

- Heavy-duty steel frame provides robust and durable construction.
- Slide-mounted, pneumatic cylinder actuated, chain take-up roller shuttle assemblies for each deck.
- Bearing mounted, steel 81X idler sprockets are equipped with regreasable pins for extended life.
- Two limit switches or prox switches per deck are mounted to each end of the air cylinder tie-rods per level to detect chain breaks or chain bind.
- Programming for dryer will go into "automatic shut-down" mode if the dryer chain breaks or jams.
- Includes all pneumatic hoses, fittings and headers, including filter/regulator, pressure gauge.
- Pneumatic lock-out system included for safe maintenance.



All electrical devices pre-wired to junction box



Chain take-up roller shuttles

DRYER DRIVE TOWER

The Westmill Board Dryer Drive Tower features individual drives for each deck of the dryer. Robust and simple in construction, it has no wearing parts. The independent drives offer improved product recovery in the event of a dryer plug-up, compared to a drive tower with a single drive motor, greatly simplifying service and maintenance processes.

Simple Design, Lower Maintenance Costs

Gone are the high-maintenance designs of meshing gears, or chain drives with multiple jackshafts and a maze of roller chains that frequently break. For each level of the dryer, Westmill provides a heavy duty gearbox, electric motor and an 81X drive sprocket. A BEI Encoder is pre-mounted to one of the motors, and its readout is used to control the frequency of the other motors, maintaining synchronous speeds across each deck.

Heavy-Duty Design & Easy Integration

- **Robust and Durable Construction:** features a heavy-wall, square tube steel frame.
- **Heavy-Duty Drive Base:** Constructed from 1-1/4" thick steel plate.
- **Fits Into Existing Envelope:** The frame can be bolted down using existing concrete anchors or welded to steel embeds in your foundation.
- **Easy Installation:** Lifting eyes are supplied for straightforward field installation.
- **Extra Rigidity:** An optional field torque arm turnbuckle is available to provide additional support.

Eases Dryer Operation:

With conventional dryer drives that use a single motor, all decks are driven simultaneously using a series of internal gears. In contrast, Westmill's Drive Tower equips each deck with its own motor and Variable Frequency Drive (VFD), allowing independent speed control of each deck

In the event of a dryer jam-up, the affected deck can be stopped independently while the other decks continue to operate, allowing you to salvage what might otherwise be lost product.

Additionally, if a single level's drive unit requires servicing, the individual deck drive unit can be disabled, and the dryer and feeder program can be temporarily adjusted to bypass the deck needing service, thereby avoiding a complete production shutdown.



CIRCULATION FAN

UPGRADE YOUR HOT AIR CIRCULATION FANS

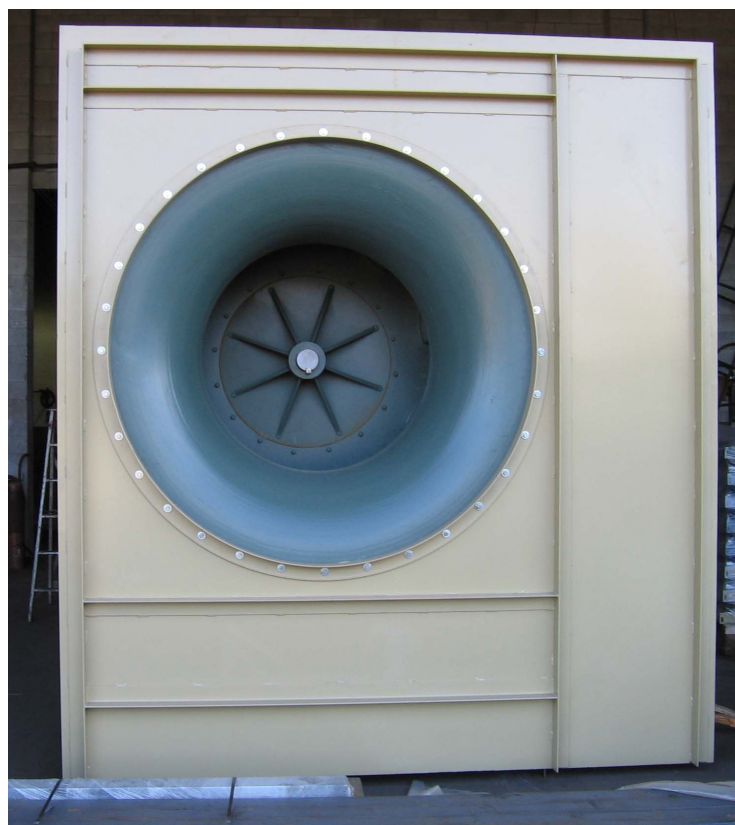
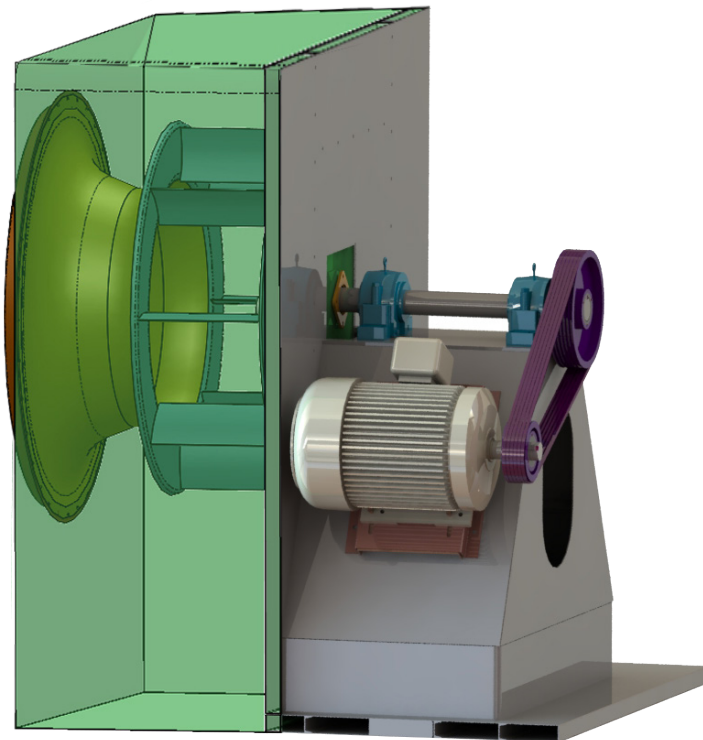
Replace your existing dryer fans with Westmill's rugged fan assemblies, available in Class III or Class IV configurations—an upgrade from the standard Class II fans typically supplied by others.

Benefits of Higher-Class Fans:

Heavier shaft, larger bearings, and a more robust fan wheel - engineered for longer service life and superior performance in high-temperature environments.

Seal-Welded Fan Modules:

Each fan module is seal-welded, well insulated, and re-skinned to ensure a leak-proof, energy-efficient drying system that delivers consistent performance over time.



WESTMILL™

parts.westmill.com | sales@westmill.com | 1-877-607-7010

WAREHOUSES: Atlanta, GA | Eugene, OR | Vancouver, BC