

"The Dryer Guys"

WESTMILLTM

**VENEER DRYER
PARTS CATALOGUE**

"THE DRYER GUYS"



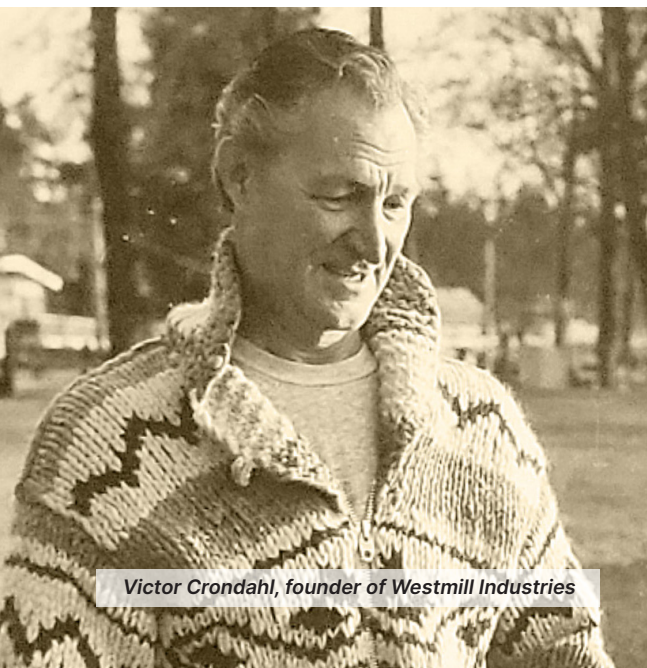
Established in 1975 by Victor Crondahl, Westmill Industries started supplying critical replacement parts and equipment to the North American plywood manufacturing industry. Nearly five decades later Westmill has become a world leader in the design and manufacture of veneer drying equipment and technologies, and continues to grow under its 2nd generation owner Mike Crondahl.

Westmill is proud of its longstanding innovative culture and heritage and of the many key dryer patents awarded to it over the past 20+ years. These industry-leading technologies are what set us apart from all others. Westmill remains most proud of being awarded both the **Innovator of the Year** and the **Supplier of the Year** awards as chosen by APA members.

Westmill continues to flourish, achieving important industry milestones such as installing the industry's **first** insulated stainless dryer floor (under an existing dryer), to being awarded the contract to build the **largest-ever** veneer dryer in the world.

To our friends and customers worldwide, THANK YOU for entrusting WESTMILL with your dryer service needs, and for helping us to succeed over the past 48 years.

Mike Crondahl
Owner/President



Victor Crondahl, founder of Westmill Industries



Westmill Industries Team - Vancouver, British Columbia

PARTS CATALOGUE

TABLE OF CONTENTS

WESTMILL INDUSTRIES

WESTMILL HISTORY.....	03
WESTMILL PATENTS.....	04
WESTMILL VENEER JET DRYER.....	05
WESTMILL OFFERS.....	07

CONVEYOR COMPONENTS

HANGER BEARINGS.....	09
BEARINGS.....	10
BEARING HOUSINGS.....	11
STAR GEARS.....	13
CHAIN HOLD DOWNS.....	14
CHAIN WINDOWS.....	14
DRYER CHAIN.....	14
SPROCKETS.....	15
GUDGEONS.....	17

ROLL TUBES & ASSEMBLIES

ROLL TUBING.....	20
WESTMILL JET DRYER.....	21
COE M-62 JET DRYER.....	22
COE M-72 JET DRYER.....	23
USNR-208.....	23
RAUTE WOOD (PRE-2000).....	24
RAUTE WOOD (2000 & NEWER).....	25
COE LONGITUDINAL (15").....	26
MOORE JET, STANDARD.....	27
MOORE LONGITUDINAL (12").....	28
MOORE & PRENTICE LONGITUDINAL.....	28
PRENTICE LONGITUDINAL (12").....	29
PRENTICE LONGITUDINAL (15").....	29

MAJOR COMPONENTS

JET TUBES.....	31
PLUG FANS.....	33
SPRING PACKING GLAND SEAL SYSTEM.....	34
FAN HARDWARE.....	35
GAS BURNERS.....	36
STEAM COILS.....	37

DRYER DOORS

QUICK-CHANGE SYSTEM 1-2-3™.....	39
ARTICULATING DOOR.....	40
DOOR CARTRIDGE.....	40
WESTMILL DOOR HARDWARE.....	41
SAFE-OPENINGS DOOR HANDLE.....	43
COE DOOR HARDWARE.....	44
MOORE DOOR HARDWARE.....	44
PRENTICE DOOR HARDWARE.....	44
TADPOLE DOOR SEAL.....	45

GENERAL COMPONENTS

PLUG-UP DETECTION.....	47
MOISTURE DETECTION.....	49
MARKING INK.....	50
DRYER CLEANER.....	50
EXPANSION ROLLERS.....	51
GLOBE SAW PARTS.....	53

**DISCOVER WHAT MAKES
WESTMILL THE LEADER
IN VENEER DRYING**

**CAPITAL EQUIPMENT &
MACHINERY PG. 55**

CONVEYOR
COMPONENTS

ROLL TUBES &
ASSEMBLIES

MAJOR
COMPONENTS

DRYER DOORS

GENERAL
COMPONENTS

WESTMILL
EQUIPMENT



'99 | FIRST PATENT

Westmill Articulating Door Hardware.

'99 | FIRST NEW LONGITUDINAL DRYER

Westmill installs their first new longitudinal dryer for Tolko, in Heffley Creek, BC.

'05 | LightSORT™ TECHNOLOGY

Westmill develops the LightSORT™ technology and installs the first system at Tolko's Kelowna Plywood plant.

'10 | INNOVATOR OF THE YEAR AWARD

Westmill is awarded the APA's prestigious APA/EWTA 2010 'Innovator of the Year'.

'20 | WESTMILL MOVES, AGAIN

Expanding in size, Westmill moves to a larger facility in Abbotsford, BC.

'75 | THE BEGINNING

Westmill is established in 1975 by Victor T. Crondahl, father of Mike Crondahl.

1990
MIKE CRONDAHL
JOINS WESTMILL

2002
1ST USA
LOCATION
OPENS

2008
2ND USA
LOCATION
OPENS

1996
MIKE CRONDAHL
BECOMES OWNER

2019
ADVISORY BOARD
CREATED

1976 -1989 | CANADIAN GROWTH

The company secures exclusive Canadian representation of many US product lines inc: Globe, Sweed, and Coe.

'00 | FIRST EVER INDUSTRY FLOOR RETROFIT

Westmill installs the Plywood industry's first ever retrofit, stainless steel insulated dryer floor at Evans Forest Products in Golden, BC.

'04 | SELL THEIR FIRST 6-DECK JET DRYER

Westmill is awarded their first 6-deck Jet Dryer for West Fraser in Edmonton, AB.

'13 | SUPPLIER OF THE YEAR AWARD

Westmill is awarded the prestigious APA/EWTA 2010 'Supplier of the Year' Award in Materials/Supplies category.

'22 | WORLD'S LARGEST DRYER AWARDED

Westmill is awarded the contract to build the Worlds Largest Veneer Dryer for Roseburg Forest Products.

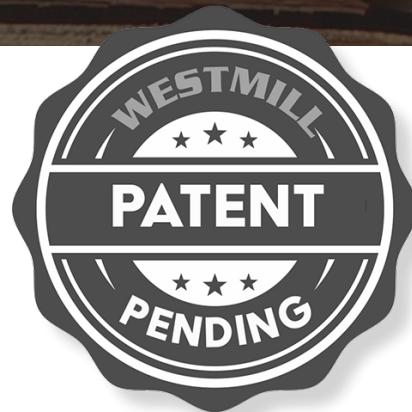
'00 | WESTMILL MOVES

Growing in size, the company moves to Langley, BC.



Worlds Longest Veneer Dryer: Roseburg, Coquille over 205 Ft (2,463") in length.





WESTMILL remains actively engaged in product development initiatives.

Our innovations have led to some of the best-in-class technologies which are being embraced by our performance minded customers. Westmill is proud of its long-term commitment to innovation, and the results they produce.

WestVac™ Emission & Dryer Seal System

PATENT NO. 10,006,712 B2 **PATENTED**

Westmill's WestVac Emission & Dryer Seal System seals the dryer's end walls to limit emissions from leaking out of the dryer's green and dry-ends, all while maintaining the optimum humidity level inside the dryer.

Quick-Change Dryer Roll Baffle System

PATENT NO. 10,317,138 B2 **PATENTED**

Westmill designed the first-ever, quickly interchangeable Dryer Roll Baffle system. The significant benefit of this innovation is that the existing roll-baffle can be removed and replaced in under 5-minutes, as compared to several hours.

UV-IR Veneer Pre-Conditioning Drying Section

PATENT NO. 11,370,145 B2 **PATENTED**

Westmill has built and tested an IR chamber specifically for veneer drying. The concept involves installing a UV-IR pre-conditioning section at the dryer infeed to quickly heat the bound water (and free water) at the core of the sheet, speeding up the start of the drying process, and therefore improving dryer performance.

2-PEx™ Exhaust & Dryer Humidity Control System

PATENT PENDING

Westmill's 2PEx™ System provides unparalleled control of the humidity ratio along the entire dryer's length resulting in the BEST veneer quality available from any dryer today.

Impressed Current Cathodic Protection (ICCP)

PATENT NO. 11,193,211 B2 **PATENTED**

Westmill has developed an effective method of virtually eliminating dryer corrosion, using Impressed Current Cathodic Protection Technology and the humidity within a dryer as the electrolyte. Our patented ICCP System is the first-ever system of its kind applied to a veneer dryer.

Westmill Articulating Door Hardware

PATENT NO. 6,447,807 **PATENTED**

The Dura-Latch Articulating Door Hardware is the most functional and easily adjustable door hardware available on the market. The design and geometry of the door handle provide for safe, quick and easy opening and closing without strain.



DISCOVER MORE WESTMILL EXCLUSIVE TECHNOLOGY

WESTMILL VENEER DRYER

CUSTOMIZED NEW DRYER

Westmill Veneer Dryers are the best available in the industry today. With superior insulating techniques and a completely seal-welded housing, Westmill has designed the most energy-efficient dryer available in the market.

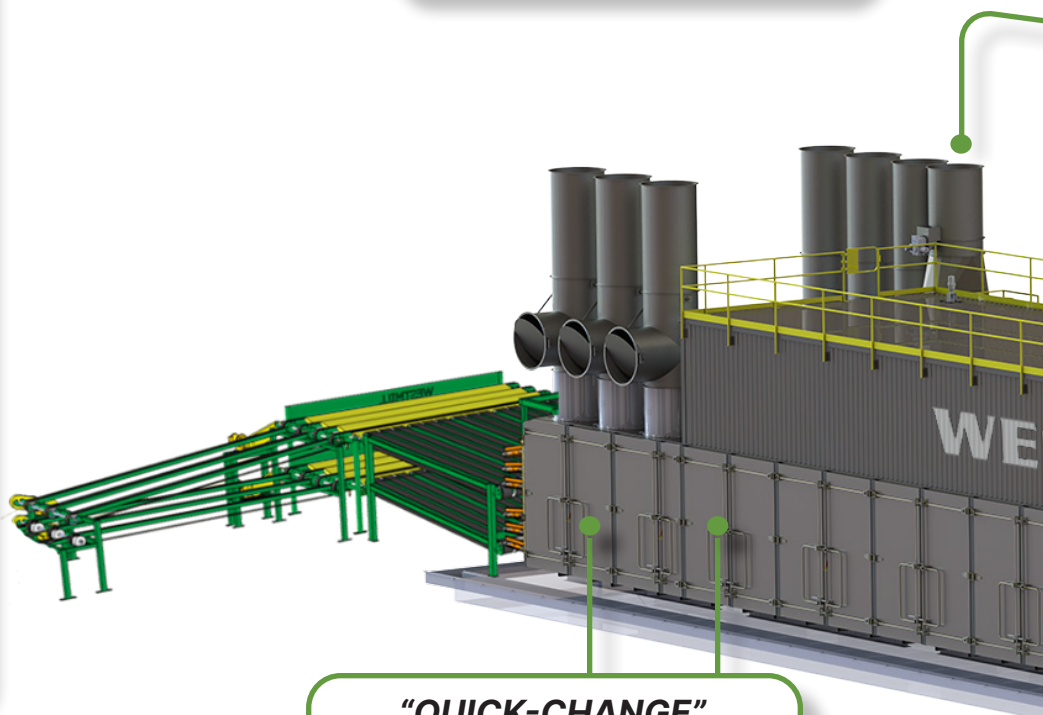
Many features that are optional on other systems are standard equipment on a Westmill Dryer. Our robust designs and quality components will provide you with many years of production and minimum maintenance expense.

DRYER TECHNOLOGY UPGRADES

As veneer dryers age, the housing begins to leak using more energy to maintain temperature set point. As a result, dryer production drops and maintenance costs rise.

Before making the decision to replace your dryer, consider a Westmill Dryer Technology Upgrade, your dryer will look and operate better than new - often a fraction of the cost of a new dryer.

**"AUTOMATED
DRYER CONTROLS"**
ALLEN-BRADLEY CONTROLLOGIX



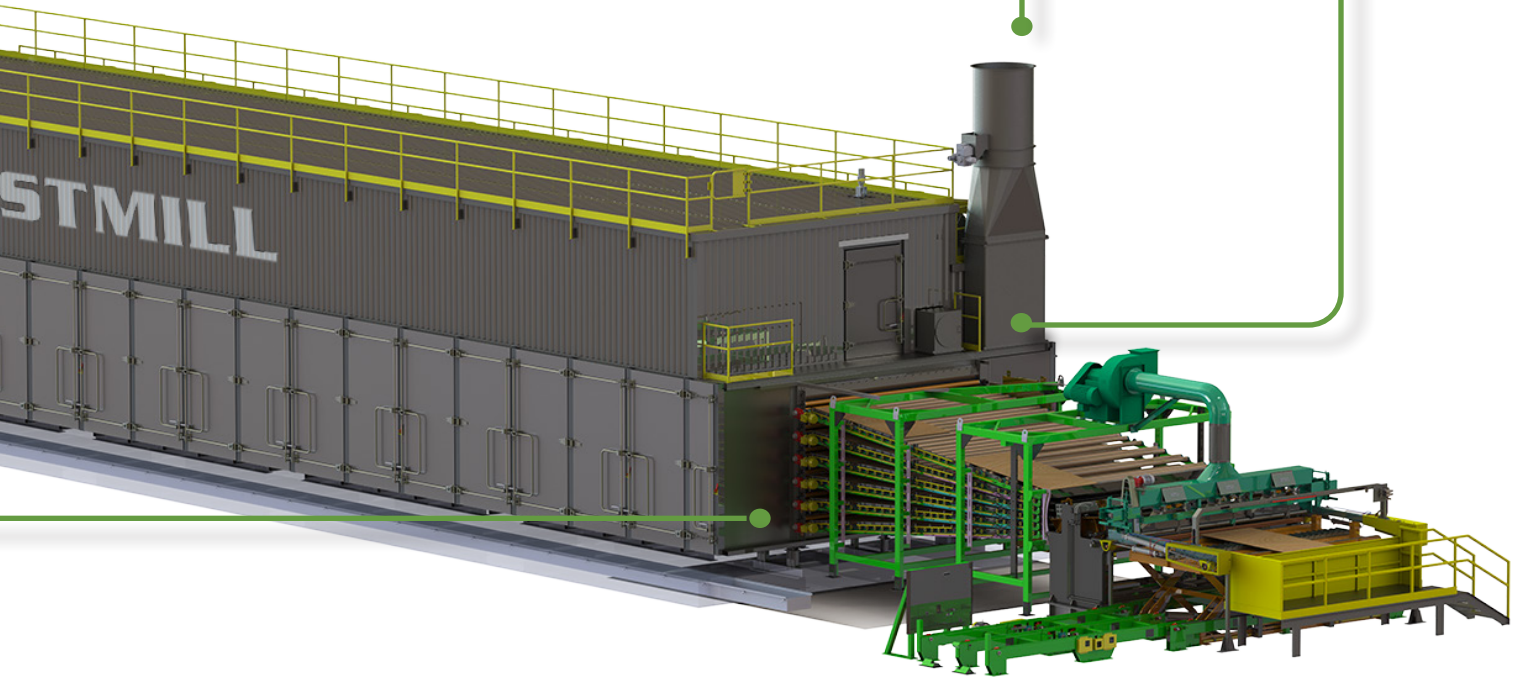
"QUICK-CHANGE"
DRYER ROLL BAFFLE SYSTEM
PATENTED

**"ARTICULATING
DOOR HARDWARE"**
PATENTED

"SAFE MOTION"
DOOR HANDLE LOAD-DAMPER
Eliminate any potential risk of 'strike-hazard' when opening a dryer door.
PATENTED

"2-PEx"
EXHAUST & DRYER HUMIDITY
MIGRATION AND CONTROL SYSTEM
PATENTED

"WESTVAC"
END-WALL EMISSION
AND CONTROL SYSTEM
PATENTED



ADDITIONAL DRYER FEATURES

Minimal Heat Transfer Dryer Housing

Eliminate metal-to-metal contact between inside and outside dryer housing to reduce heat transfer.

Quick-Change Dryer Door Seal System

Change door seals in under 5 minutes.

Dryer Floor

Stainless steel, seal welded and insulated; rust-proof for long life.

Water Misting System

Greatly reduces the risk of dryer fires caused by fuel build-up and embers.

Drive Tower

Individual deck drives for minimum maintenance, accurate speed control and maximum veneer recovery in the event of a plug-up.

Dryer Humidity & Emissions Control

Westmill's innovative WestVac and 2PEx Systems combine to maintain optimum humidity levels inside the dryer to consistently produce high-quality veneer, minimize energy consumption while maximizing production.

Jet Tubes

Our jet tubes feature high-velocity orifices for maximum air flow and heat transfer to the veneer.

WESTMILL OFFERS



Serving the panel board industry since 1975, Westmill has emerged as North America's leading dryer specialist.

A leader in board drying technologies, Westmill specializes in supplying new veneer dryer systems, dryer technology upgrades, and is the largest stocking supplier of dryer parts in the world. Westmill is committed to providing Veneer Dryer Innovations.

Westmill Offers:

- Customized New Dryers
- Dryer Rebuilds & Upgrades
- Dryer Parts for all Makes & Models
- Inspections & Consulting
- Infeed & Outfeed Equipment
- Exclusive Innovative Technologies

"We really appreciate the support that WESTMILL provides. Their dryers are high quality and their service is some of the best!"

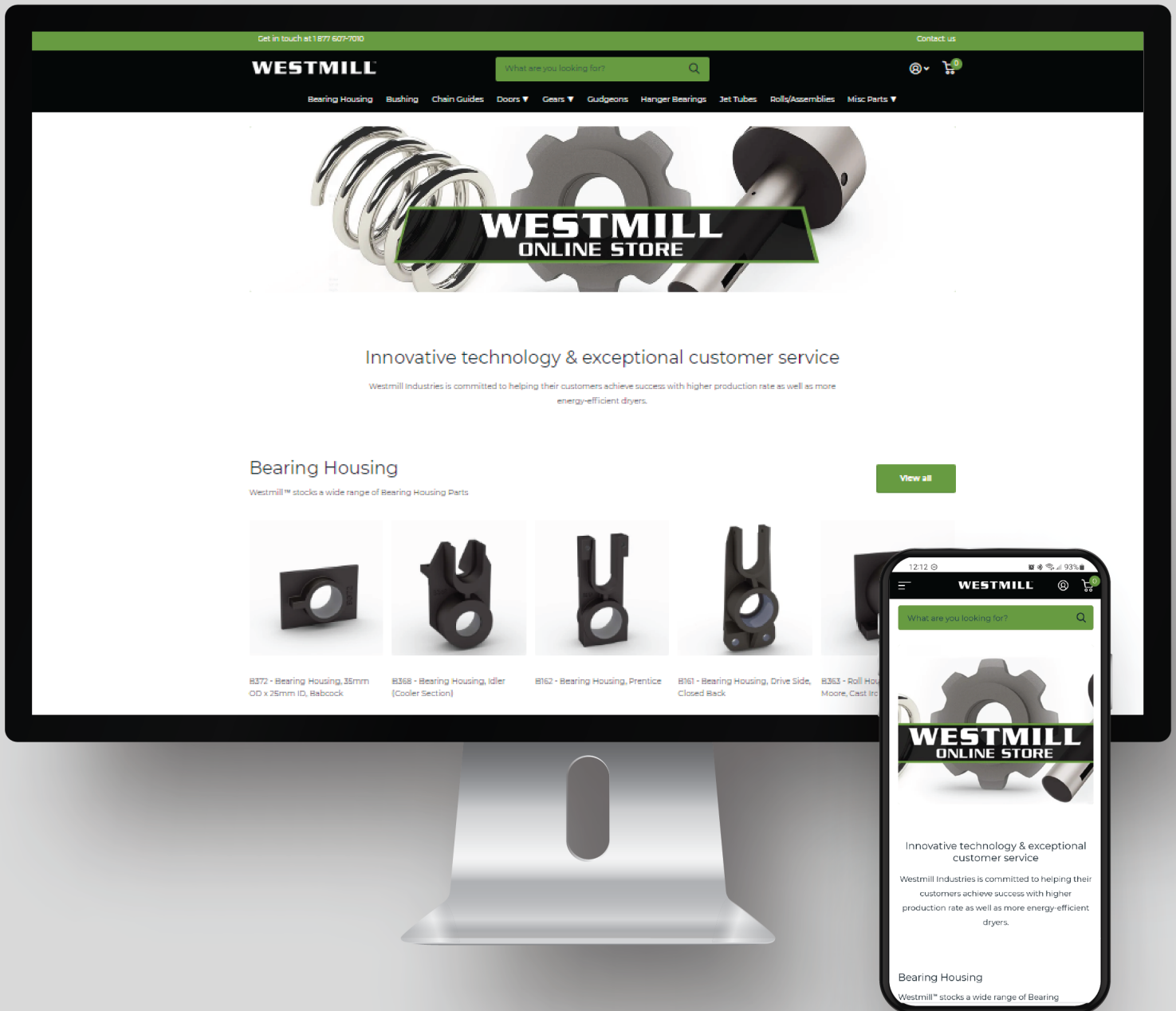
Michael Rudy - Timber Products

WAREHOUSES IN VANCOUVER, BC | PORTLAND, OR | ATLANTA, GA



SHOP ONLINE

PARTS FOR ALL DRYER MODELS



SIGN UP TODAY! parts.westmill.com



HANGER BEARINGS

CONVEYOR COMPONENTS

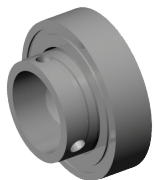


BU27



BU28

ROLL TUBES & ASSEMBLIES



BU29



BU30

MAJOR COMPONENTS

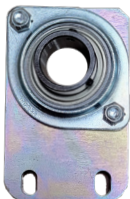


BU45



WM-113

DRYER DOORS



WM-116C



WM-113-GP

WESTMILL PART NO.	CROSS REF.	PART DESCRIPTION	BORE SIZE
BU27	C-76113-2SSB	Infeed Hanger Bearing (flat back)	1-1/4"
BU28	C-76116-2SSB	Infeed Hanger Bearing (over angle)	1-1/4"
BU29	-	Replacement Sealed Bearing Insert for Hanger Bearings (WM-113, 116 and 116C)	1-1/4"
BU30	C-237	Bearing, Hanger, 4-Hole, Flat-Back	1-1/4"
BU45	-	Bearing Hanger Assy, Saddle-Mounted, 1-1/4" Bore, w/ B-100 Bearing and Clip Lock	1-1/4"
WM-113	C-76113-2SSB	Infeed Hanger Bearing (flat back) with Replaceable Sealed Bearing Insert (BU29)	1-1/4"
WM-116C	C-76116-2SSB	New Infeed Hanger Bearing (over angle) with Replaceable Sealed Bearing Insert (BU29)	1-1/4"
WM-113-GP	C-76116-2SSB	Board Mill Bearing (flat back) with Replaceable Sealed Bearing Insert (BU29)	1-1/4"

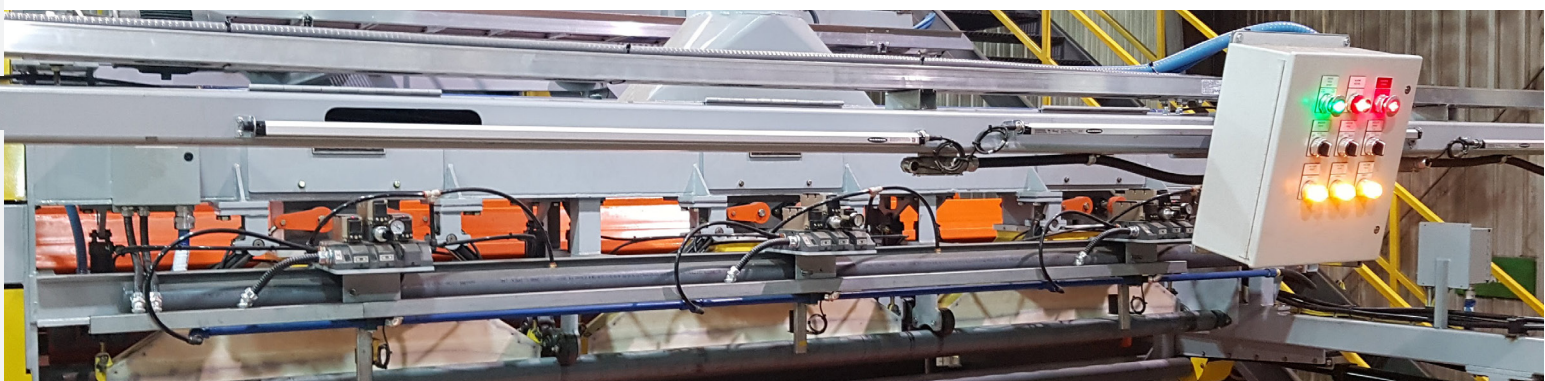
GENERAL COMPONENTS

WESTMILL STOCKS THE MOST DRYER PARTS IN THE WORLD

Westmill warehouses stock the largest variety of dryer parts and can supply components for ALL makes and models. With three warehouses located across North America...

We've got your back!

WESTMILL EQUIPMENT



WESTMILL PART NO.	COMPATIBLE DRYERS	BORE SIZE	OUTER DIAMETER	LENGTH THRU BORE
-------------------	-------------------	-----------	----------------	------------------

DRIVING FORCE™ EXTENDED LIFE BEARING

BU34W	Westmill, Coe, USNR, Moore, Prentice	1-1/2"	2"	1-1/2"
BU15W	Raute Wood	25mm	45mm	38mm
BU13W	Raute Wood	1"	1-3/4"	1-7/16"
BU14W	Raute Wood	1"	1-3/4"	2-1/8"
BU31W	Standard Dryer Bearing (Westmill, Coe)	1-1/2"	2-1/2"	1-3/4"
BU21W	Westmill, Coe, USNR, Moore, Prentice	1-1/4"	2"	2-1/4"

TEFLON BEARING

BU12	Moore	1"	1-1/2"	1-1/2"
BU13	Raute Wood	1"	1-3/4"	1-7/16"
BU14	Raute Wood	1"	1-3/4"	2-1/8"
BU15	Raute Wood	25mm	45mm	38mm
BU21	Moore	1-1/4"	2"	2-1/4"
BU26*	Coe	1-1/4"	2-1/2"	1-3/4"
BU34	Westmill, Coe, USNR, Moore, Prentice	1-1/2"	2"	1-1/2"
BU31	Standard Dryer Bearing (Westmill, Coe)	1-1/2"	2-1/2"	1-3/4"

GRAPHITE BEARING

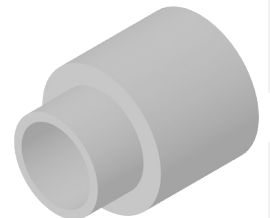
BU91	Babcock	18mm (0.71")	26mm (1.02")	28.5mm (1.12")
BU92	Babcock	25mm (0.98")	35mm (1.38")	30mm (1.18")
BU22	Moore	1-1/4"	2"	2-1/4"
BU15G	Raute Wood	25mm	45mm	38mm
BU15GI	Raute Wood	1"	1-3/4"	1-1/2"
BU43	Coe M72	1-1/2"	2"	1-1/4"
BU24*	Westmill, Coe	1-1/4"	2-1/2"	1-3/4"
BU32	Standard Dryer Bearing (Westmill, Coe)	1-1/2"	2-1/2"	1-3/4"

COPPER IMPREGNATED GRAPHITE BEARING

BU39C	Coe	1-1/4"	2-1/2"	1-3/4"
BU34C	Westmill, Coe, USNR, Prentice	1-1/2"	2"	1-1/2"
BU92C	Raute Jet	25mm	35mm	30mm
BU33C	Standard Dryer Bearing (Westmill, Coe)	1-1/2"	2-1/2"	1-3/4"



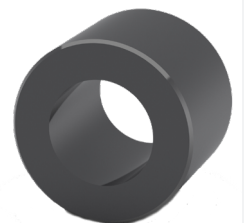
Driving Force™ Bearing
BU31W



Driving Force™ Bearing
BU14W



Teflon Dryer Bearing
BU31



Standard Graphite Bearing
BU32

CONVEYOR
COMPONENTS

ROLL TUBES &
ASSEMBLIES

MAJOR
COMPONENTS

DRYER DOORS

GENERAL
COMPONENTS

WESTMILL
EQUIPMENT

* Used on Coe Infeed Section | Please contact our sales team for other available bearing materials and sizes.

SCAN QR CODE | Shop Online for Bearings



BEARING HOUSINGS

CONVEYOR COMPONENTS



B161



B162

ROLL TUBES & ASSEMBLIES



B163



B261

MAJOR COMPONENTS



B262



B263

DRYER DOORS



B361



B362

GENERAL COMPONENTS



B365



B366

WESTMILL PART NO.	CROSS REF.	PART APPLICATION	BORE SIZE
B161	8212, PC072115	Westmill, Coe M72 Drive Side Closed Back	2-1/2"
B162	Prentice C-30	Bolts to C006 (NW-64) Chain Hold down Replaces Moore RD-65 and RD-165	2-1/2"
B163	10499	Coe M-62 Drive Side	2-1/2"
B261	10497, PC072113	Westmill, Coe M62/M72 Idler Side	2-1/2"
B262	PC072113L	Bearing Housing, Extended, Idler Side, Seal Section	2-1/2"
B263	PC072115L	Bearing Housing, Extended, Drive Side, Seal Section	2-1/2"
B361	Moore RD-165	For Moore Dryer with 12" vertical deck spacing (short casting)	2-1/2"
B362	Moore RD-65 Prentice C-2	For Moore Dryer with 15" vertical deck spacing	2-1/2"
B365	Coe PB-016048 8281RH	Coe: At door post notched at right	2-1/2"
B366	Coe PB-016048 8281LH	Coe: At door post notched at left	2-1/2"

WESTMILL EQUIPMENT



WESTMILL PART NO.	CROSS REF.	PART APPLICATION	BORE SIZE
B367	PB-034280 10895A	Westmill, Coe: Drive Side raises top roll, Cooler	2-1/2"
B368	PB-034281 10893A	Westmill, Coe: Idler Side raises top roll, Cooler	2-1/2"
B331	Raute Wood 4R708667	Raute Wood: Drive and Idler side	1-3/4"
B331-M	Raute Wood 4R50430GKK	Raute Wood: Drive and Idler side	45mm (1.77")
B363	Moore RD-162 Coe 619-2007-00	Drive and Idler side	2"
B369	Babcock 8588	Babcock: Screen Dryer	45mm (1.77")
B370	Babcock 4-bolt	Babcock: Screen Dryer	45mm (1.77")
B371	Moore RD-161 Coe 619-2006-00	Moore: Top Roll Guide	1-11/6"
B372	8001645	Babcock, 35mm OD x 25mm ID Bearing	35mm



B367



B368



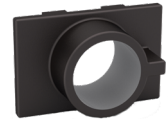
B331



B331-M



B363



B369



B370



B371



B372

CONVEYOR
COMPONENTS

ROLL TUBES &
ASSEMBLIES

MAJOR
COMPONENTS

DRYER DOORS

GENERAL
COMPONENTS

WESTMILL
EQUIPMENT

SCAN QR CODE | Shop Online for Bearing Housings



STAR GEARS

CONVEYOR
COMPONENTS

ROLL TUBES &
ASSEMBLIES

MAJOR
COMPONENTS

DRYER DOORS

GENERAL
COMPONENTS

WESTMILL
EQUIPMENT

WESTMILL PART NO.	CROSS REFERENCE	TEETH	HUB STYLE	BORE	KEY WAY	LENGTH THRU BORE	TOOTH WIDTH
S213	Moore RD-130	10	A	1-1/4"	1/4"	15/16"	13/16"
S302	Coe M62 Jet	10	A	1-1/2"	-	1-1/4"	1-1/8"
S313	Moore RD-130	10	A	1-1/2"	1/4"	15/16"	13/16"
S312	Moore RD-2S	10	A	1-1/2"	1/4"	1 1/4"	1-1/8"
S323	NW-20-C	10	A	1-1/2"	3/8"	1 1/4"	1-1/8"
S111	Moore RD-77, NW 22 MRJ, Coe 8216	10	B	1"	1/4"	2 1/4"	1-1/8"
S201	Moore	10	B	1-1/4"	-	2 1/4"	1-1/8"
S211	NW-19 MJ	10	B	1-1/4"	1/4"	2 1/4"	1-1/8"
S221	Moore RD-130	10	A	1-1/4"	3/8"	15/16"	13/16"
S222	NW25-1/4, Moore RD-3, Coe 389	10	B	1-1/4"	3/8"	2 1/4"	1-1/8"
S301	Moore, Prentice	10	B	1-1/2"	-	2 1/4"	1-1/8"
S311	Moore, Prentice	10	B	1-1/2"	1/4"	2 1/4"	1-1/8"
S324	Westmill, Coe M72 Cooler	10	B	1-1/2"	3/8"	1 3/4"	1"
S322	Westmill, Coe PC018139	10	B	1-1/2"	3/8"	1 7/8"	1-1/8"
S101-M	Raute Wood 3R403462	12	B	25mm	8mm	1.9"	1"
S321	Coe	10	B	1-1/2"	3/8"	2 1/4"	1-1/8"
S101	Raute Wood 3R708513	12	B	1"	1/4"	1.9"	1"



Standard (B-Hub)



Hubless (A-Style)



Feed Section Flat Star Gear
S213

SCAN QR CODE |
Shop Online for
Star Gears



CHAIN HOLD DOWNS & WINDOWS

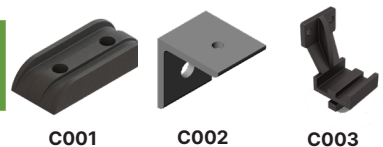
WESTMILL™
The Leader in Veneer Drying Technologies

CHAIN HOLD DOWNS

Chain hold downs keep your dryer chain engaged to the roll sprockets and support the chain among its return path. Our chain hold downs are made from rugged cast iron.

Westmill also supplies mounting brackets for the chain hold downs, if required.

WESTMILL PART NO.	CROSS REFERENCE	PART NAME
CHAIN HOLD DOWNS		
C001	Moore RD-7	Chain Return Shoe
C002	Moore RD-7C	Return Shoe Mounting Clip
C003	Coe 8213	Long Chain Hold down & Return
C004	Coe 7907, Coe 10979	Short Chain Hold down and Return for Coe M-62
C005	Coe 8228	Top Chain Hold down - Long
C006	Prentice C30	Prentice Chain Hold Down - bolts to m62 Rabbit Ear
C007	Westmill, Coe PC065295	Chain Hold Down and return for Coe M72
C012	Moore RD-145 Coe 619-2040-00	Moore Dryer Chain Return Shoe
C017	RD-158	Drive Chain



CHAIN WINDOWS

C008	Prentice C33	Single Chain Window (Prentice)
C014	Prentice C34	Double Chain Window (Prentice)
C009	PA033855, CP010866	Double Chain Window
C010	PB025130, CP010867	Single Chain Window (out)
C011	PB025131, CP010868	Single Chain Window (in)

DRYER CHAIN (81X)

Westmill supplies various styles of 81X veneer dryer chain. 81X chain is also used on other material conveying machinery.

We offer several sizes of chain:

- 81X chain: Straight side bar, bushed roller chain
- 81X-HD Chain: Heavy duty, straight side bar, bushed roller chain
- 81X-XHD Chain: Extra heavy duty, straight side bar, bushed roller chain
- Connecting links for all of the above chains

CHAIN	DUTY LEVEL	LINK
WEST-81X	81X, Standard Duty	WEST-81XXSD
WEST-81XHD	81X, Heavy Duty	WEST-81XXHD
WEST-81XKD	81X, Kiln Duty	WEST-81XXKD

**GLOBE SAW CHAIN
& PARTS**
GENERAL COMPONENTS
PG. 53

CONVEYOR
COMPONENTS

ROLL TUBES &
ASSEMBLIES

MAJOR
COMPONENTS

DRYER DOORS

GENERAL
COMPONENTS

WESTMILL
EQUIPMENT

SPROCKETS

CONVEYOR
COMPONENTS

ROLL TUBES &
ASSEMBLIES

MAJOR
COMPONENTS

DRYER DOORS

GENERAL
COMPONENTS

WESTMILL
EQUIPMENT

WESTMILL PART NO.	CROSS REFERENCE	TEETH	HUB STYLE	BORE	KEY WAY	LENGTH THRU BORE	TOOTH WIDTH
----------------------	-----------------	-------	--------------	------	------------	------------------------	----------------

HOOK TOOTH & REVERSING (81X)

SP222	Coe-389 Moore RD-3	7	C	1-1/2"	1/4"	2-1/4"	1"
SP321	Coe-389 Moore RD-3	7	C	1-1/2"	3/8"	2-1/4"	1"
SP111	MRJ Coe 8216 Moore RD-77	8	C	1"	1/4"	2-1/4"	1"
SP211	Coe 8216 Moore RD-77	8	C	1-1/4"	1/4"	2-1/4"	1"
SP221	Coe 8216 Moore RD-77 PB-015261	8	C	1-1/4"	3/8"	2-1/4"	1"
SP223	Coe 8216 Moore RD-77	8	C	1-1/2"	1/4"	2-1/4"	1"
SP224	Prentice C-9 Reversing Sprocket	8	C	1-1/2"	1/4"	2-1/4"	1"
SP226	Split Sprocket NW-22S	8	C	1-1/4"	-	2-3/8"	1"
SP227	-	8	C	1-1/4"	-	2-1/4"	1"
SP234	NW-J22C	8	C	1-1/2"	3/8"	5-5/8"	1"
SP322	Coe 8216 Moore RD-77 Narrow Tooth Width	8	C	1-1/2"	3/8"	2"	1/2"
SP323	Westmill, Coe PC018140 (M72/M62)	8	C	1-1/2"	3/8"	2-1/4"	1"
SP323-H	Coe PC018140 (M72/M62)	8	C	1-1/2"	3/8"	2-1/4"	1"
SP326	Westmill, Coe Split Sprocket	8	C	1-1/2"	-	2-3/8"	1"

DRYER DRIVE TOWER SPROCKETS (81X)

SP730	RD-76 Moore NW-86	8	B	2-3/16"	1/2"	3"	7/8"
SP840	NW-87 Coe	8	C	2-3/16"	5/8"	3"	7/8"



RAUTE WOOD
RAU-013



REVERSING HOOK
TOOTH SP224



HOOK TOOTH
SPROCKET SP323



HOOK TOOTH
SPROCKET SP323-H



HOOK TOOTH SPLIT
SPROCKET SP326

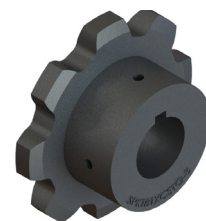
HUB STYLE	DESCRIPTION
A HUB	No Flange
B HUB	Flange on one side
C HUB	Flange on both sides



HOOK TOOTH
SPROCKET SP227



DRIVE SPROCKET
SP840



DRIVE SPROCKET
SP730

WESTMILL PART NO.	CROSS REFERENCE	TEETH	HUB STYLE	BORE	KEY WAY	LENGTH THRU BORE	TOOTH WIDTH
----------------------	-----------------	-------	--------------	------	------------	------------------------	----------------

DRYER IDLER SPROCKETS (81X)

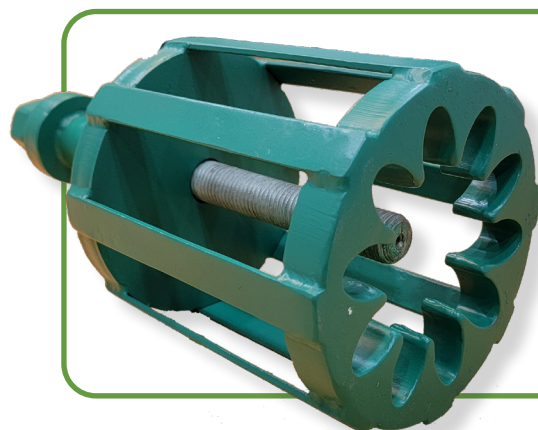
SB400	RD-175A	8	B	1.775" Ball Bearing	-	3"	7/8"
SZ600	RD-175	8	B	2-3/16" Bronze Bushing	-	3"	7/8"
SZ221	Coe	8	C	1-1/4" Bronze Bushing	-	3"	7/8"

RAUTE WOOD / DURAND-RAUTE (RC100)

RAU-011	514-6017 Dryer Roll Sprocket	17	B	1"	1/4"	1-1/2"	0.692"
RAU-013	Raute Metric-3 Sheet Dryer	15	B	25mm	8mm	1-1/2"	18mm

DRIVE & IDLER (RC50)

WEST- 109	50B10 Idler Sprocket	10	B	3/4" Oilite Bushing	-	1"	0.343"
SP212	Drive Sprocket	15	B	1-1/2"	1/4"	1"	0.343"
SP213	Drive Sprocket	16	B	1"	1/4"	1"	0.343"

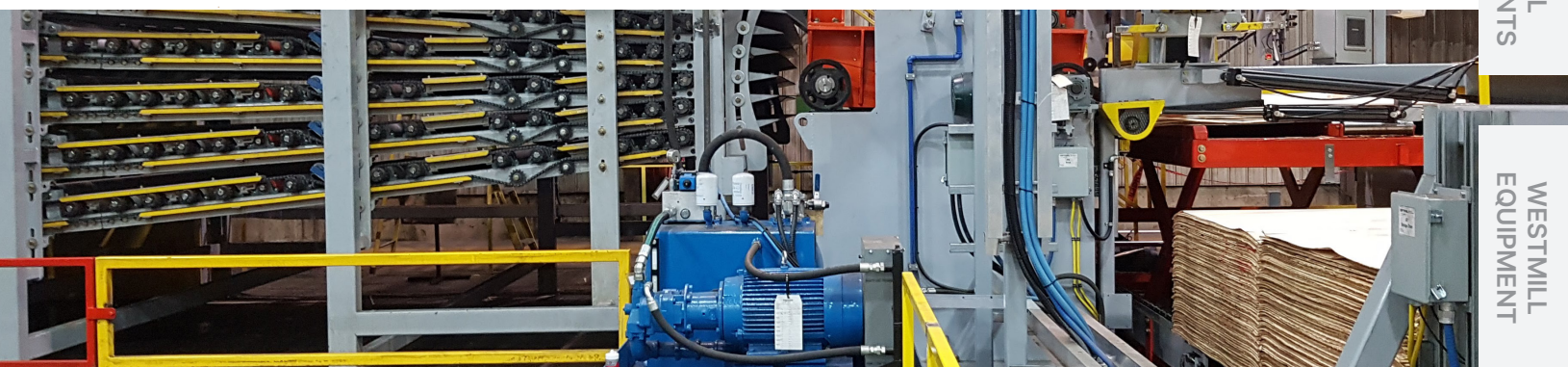


WE STOCK SPROCKET PULLERS

Safe & Easy Removal

Please contact our sales team
for more information.

HUB STYLE	DESCRIPTION
A HUB	No Flange
B HUB	Flange on one side
C HUB	Flange on both sides



GUDGEONS

CONVEYOR
COMPONENTS

ROLL TUBES &
ASSEMBLIES

MAJOR
COMPONENTS

DRYER DOORS

GENERAL
COMPONENTS

WESTMILL
EQUIPMENT

WESTMILL PART NO.	DIAMETER	LENGTH	KEY SIZE	CONSTRUCTION	NOTES
----------------------	----------	--------	-------------	--------------	-------

GUDGEON ONE WOODRUFF KEY | Note: Key #808 is 1/4" wide x 1" long | Key #1210 is 3/8" wide x 1-1/4" long

G211	1-1/4"	3"	#808	Cast Iron	Infeed
G223	1-1/4"	3"	#1210	Cast Iron	Coe Dryer
G212	1-1/4"	3-1/2"	#808	Cast Iron	Infeed
G225	1-1/4"	3-3/4"	#1210	Cast Iron	Infeed Gudgeon for M72
G224	1-1/4"	4"	#1210	Cast Steel	Infeed Gudgeon for M72
G213	1-1/4"	5"	#808	Cast Iron	Infeed Drive
G222	1-1/4"	5"	#1210	Cast Iron	Coe
G221	1-1/2"	4-3/8"	#1210	Cast Iron	Coe M62
G321	1-1/2"	4-3/8"	#1210	Cast Iron	Westmill, Coe M72
G311	1-1/2"	5"	#808	Cast Iron	Moore & Prentice
G322	1-1/2"	5"	#1210	Cast Iron	Coe
G327	1-1/2"	5-1/2"	#1210	Cast Iron	-

GUDGEON TWO WOODRUFF KEY | Note: Key #808 is 1/4" wide x 1" long | Key #1210 is 3/8" wide x 1-1/4" long

G215	1-1/4"	5"	#808	Cast Iron	Flattening Roll
G326	1-1/2"	5"	#808	Cast Iron	Cross-Over Drive
G325	1-1/2"	6-1/2"	#1210	Cast Steel	Cross-Over Drive
G323	1-1/2"	7-3/8"	#1210	Cast Steel	Coe M62
G324	1-1/2"	7-3/4"	#1210	Cast Steel	Westmill, Coe M72

GUDGEON SNAP RING GROOVE

G101-M	25mm	2-1/2"	NA	Cast Iron	Raute Top & Bottom, idler side
G101	1"	2-5/8"	NA	Cast Steel	Raute Top & Bottom, idler side
G302	1-1/2"	2-3/4"	NA	Cast Iron	Westmill, Coe M62/M72



WESTMILL PART NO.	DIAMETER	LENGTH	KEY SIZE	CONSTRUCTION	NOTES
----------------------	----------	--------	----------	--------------	-------

GUDGEON STRAIGHT KEYWAY

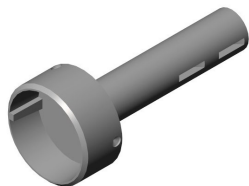
G111-M	25mm	3-15/16"	8mm	Cast Steel	Raute Top Drive Side
G112-M	25mm	5-13/16"	8mm	Cast Steel	Raute Bottom Drive Side
G111	1"	4-1/8"	1/4" x 2-1/4"	Cast Steel	Raute Top Drive Side
G112	1"	6"	1/4" x 4"	Cast Steel	Raute Bottom Drive Side
G214	1-1/4"	5"	1/4" x 3"	Cast Steel	Infeed
G216	1-1/4"	6-1/4"	1/4" x 2"	Cast Steel	Coe Infeed Lower Roller
G217	1-1/4"	6-3/4"	1/4" x 4"	Cast Steel	Infeed
G312	1-1/2"	5"	1/4" x 3"	Cast Iron	Coe

GUDGEON NO KEY

G201	1-1/4"	2"	NA	Cast Iron	Infeed
G203	1-1/4"	4"	NA	Cast Steel	Infeed Gudgeon for M72
G202	1-1/4"	5"	NA	Cast Iron	Infeed
G301	1-1/2"	2"	NA	Cast Iron	Westmill, Coe M62/M72 Top, Moore
G303	1-1/2"	5"	NA	Cast Iron	Moore Top
G304	1-1/2"	6-1/2"	NA	Cast Iron	-



ONE WOODRUFF KEY
G211



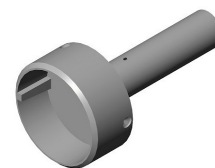
TWO WOODRUFF KEY
G324



SNAP RING GROOVE
G302



STRAIGHT KEYWAY
G312



NO KEY
G202

CUSTOM GUDGEONS

Westmill can supply any custom gudgeon design required.

The gudgeon shaft is connected to the bell housing by welding. Our bell housings are designed to fit roll tubes 3-3/4" outer diameter x 0.125" wall. We can also assemble the entire roll assembly before shipping.

SCAN QR CODE |
Shop Online for Gudgeons



WESTMILL™

parts.westmill.com | sales@westmill.com | 1-877-607-7010

WAREHOUSES: Atlanta, GA | Portland, OR | Vancouver, BC