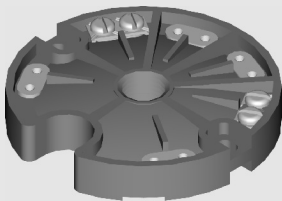
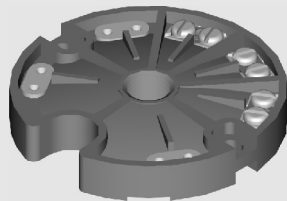


# 7000 Series RTD Assembly Terminal Block Options



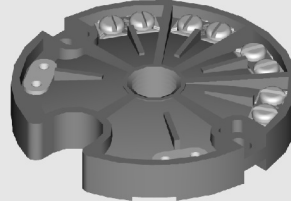
Two Terminal Configuration

Part Number  
T02= Two Terminals



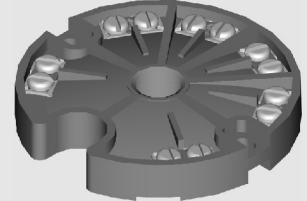
Three Terminal Configuration

Part Number  
T03=Three Terminals



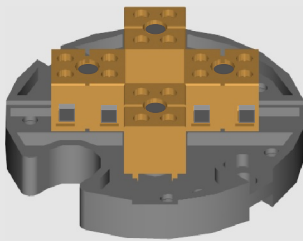
Four Terminal Configuration

Part Number  
T04=Four Terminals



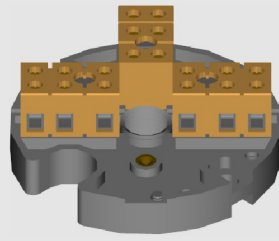
Six Terminal Configuration

Part Number  
T06= Six Terminals

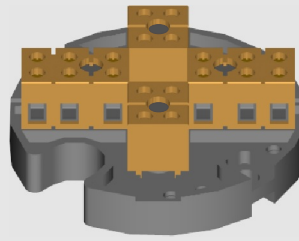


Eight Terminal Configuration

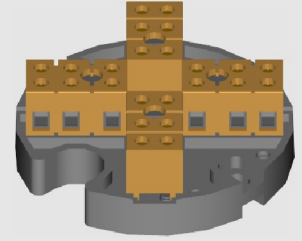
Part Number  
T08=Eight Terminals



Nine Terminal Configuration

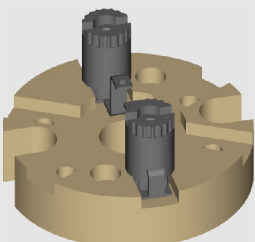


Ten Terminal Configuration



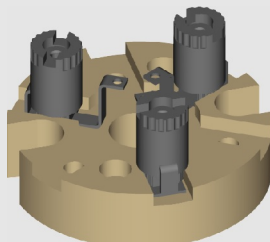
Twelve Terminal Configuration

Available for multi-point assemblies. Refer to catalogue **page B13** for information on multi-points. Additional information available through local sales representative.



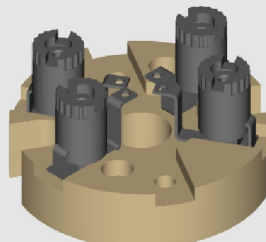
Two Terminal Configuration

Part Number  
C02=Two Terminals



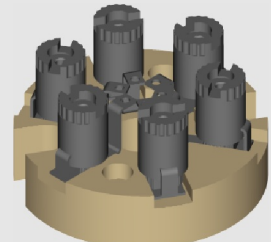
Three Terminal Configuration

Part Number  
C03=Three Terminals



Four Terminal Configuration

Part Number  
C04=Four Terminals



Six Terminal Configuration

Part Number  
C06=Six Terminals